



ONE-HAND ASSISTED-OPENING KNIFE

It took Buck's engineers to develop a patented mechanism that provides true one-hand operation with integrated safety. Our exclusive assisted-opening knives include these features:

- Patented, Assisted-Opening ASAP Technology™ - a dual pivot mechanism to assist blade opening
- Cam-lock safety for added protection
- True one-hand operation—open and close
- High quality stainless steel—420HC or S30V
- Edge2x™ Technology—for a blade that is sharper out of the box, holds an edge longer, and is easier to resharpen
- Warranted for life with Buck's famous Forever Warranty

WHAT IS AN ASSISTED OPENING KNIFE?

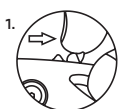
A typical folding knife provides no assistance with opening of the blade. An "assisted-opening" knife utilizes a mechanism to help deploy the blade once opening has been manually initiated. The design of an "assisted-opening" knife differentiates it from an automatic or switchblade type knife. The concept of an "assisted-opening" knife is not new and dates back to the 1800s.

WHAT IS THE PURPOSE OF BUCK'S ROLLING CAM LOCK SAFETY?

Buck's cam lock safety prevents the blade release ridge from being accidentally engaged. After the safety is opened, manual pressure must be placed on the blade release ridge, thumb stud, or blade hole before the dual pivot mechanism can assist in opening the blade. This two-stage operation was designed to provide a high measure of safety to the user on the 293 and 294 models.

The rolling camlock rotates flush with the handle for comfortable use and pops up when closing the blade.

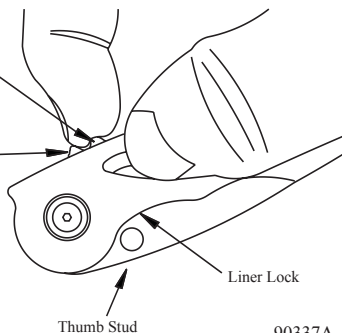
1. To Open: Hold in one hand. Pull Safety back.



2. Push Blade Release Ridge, Thumb Stud or Bladehole.

2.

3. To Close: Push Liner lock left, close blade using two hands, push Safety forward (closed).



90337A



499 GUTHOOK RING

- Acier inoxydable 420HC
- Design léger et confortable
- Son design et sa performance permettent une éviscération sur place sécuritaire et propre
- Vendu individuellement ou en ensembles combinés
- Étui en nylon renforcé
- Technologie Edge2x™ avancée
- Garantie à vie
- Fabriqué aux États-Unis



CONSIGNES D'UTILISATION

1. Insérez votre couteau pour effectuer une incision à l'endroit où vous désirez commencer.

2. Maintenez votre Guthook Ring tel que montré à la Figure 1 (vous pouvez tirer ou pousser). Insérez votre Guthook Ring dans l'incision et tirez délicatement pour couper à travers le cuir.

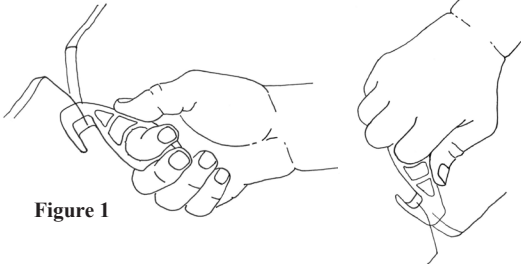


Figure 1

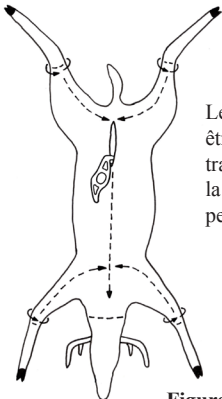


Figure 2

Le Guthook Ring est facile à manœuvrer et peut être utilisé sur les pattes et également pour couper à travers la paroi abdominale. Consultez la Figure 2 à la gauche au sujet du parcours que le Guthook Ring peut prendre pour le retrait du cuir.

www.buckknives.com • 800-326-2825
660 S. Lochsa Street • Post Falls, ID 83854 États-Unis