



**2024 DEALER
CATALOG**

INDEX

- 7 2024 NEW PRODUCTS
- 9 CLASSIC HUNTING
- 21 MODERN HUNTING
- 41 EVERYDAY CARRY
- 67 FISHING & OUTDOORS
- 75 2024 LEGACY COLLECTION
- 81 SHARPENERS
- 83 DISPLAYS
- 85 GEAR



BUCK® KNIVES is unapologetically rooted in legacy, committed to craftsmanship, and defined by our devotion to our customers since 1902. We believe integrity and self-reliance are never out of style. Our brand stands as a bellwether of getting the job done right for over 120 years.





EXPERIENCE TAKES TIME.

There's a lot that goes into mastering a craft. It can take years—even decades—of experience to become the best at what we do, and there are no shortcuts to getting us there. Ultimately, it's the time and the experience gained that reveals the difference between knowing how to do something and knowing how to do it really, really well. That difference can be remarkable.

At Buck, we never take our experience for granted. It's the foundation for every knife we make. On that experience, we continue to build—learning, strengthening, and honing our craft, employee by employee—every day to make the best knives we can. It's our job, our passion, and our promise to you as our customer.



Experience Unrivaled.



CRAFTSMANSHIP • HERITAGE • AUTHENTICITY

THE BUCK DIFFERENCE

From our in-house heat treatment to our Forever Warranty, the process of building a knife the Buck way is what makes a Buck knife stand apart from its competition.

PAUL BOS HEAT TREATMENT

Heat treat could best be called “temperature treating” since Buck uses a system of hot and cold to get the most from the steel. This system was pioneered by Paul Bos, whose heat treating formulas have proven to be the best in the business. Each blade is tempered to the appropriate Rockwell hardness through a heating, freezing, and reheating system that defines the properties desired from the steel.

“Paul Bos dedicated over five decades to dialing in and perfecting our heat treat process. The proper heat treat is critical to ensure the best balance between hardness for edge retention, ductility and strength for rugged use, and optimization for corrosion resistance. We still rely on Paul’s expertise today and religiously follow the time-tested formulas he pioneered.”

–CJ Buck
CEO and Chairman, Buck Knives



FOREVER MEANS FOREVER

At Buck, we guarantee our knives forever because we believe in the integrity of our products. It was the philosophy of our founder, Hoyt Buck, that pioneered our Forever Warranty, and we continue to pass it down with each generation. Hoyt recognized what Buck knives have to offer and was committed to making them last.



2024 NEW PRODUCTS

- 24 ALPHA ELITES
- 27 ALPHA SELECTS
- 29 PAKLITE PROS
- 31 PAKLITE SELECTS
- 44 WHARNCLIFFE DEPLOYS
- 59 TRACE SERIES
- 62 SOVEREIGN SERIES
- 77 2024 LEGACY COLLECTION
- 83 NEW DISPLAYS
- 85 NEW BUCK GEAR

A man in a tan shirt and dark pants is walking through a field of tall, dry grass. He is carrying a large, olive-green backpack. On top of the backpack, several large, dark antlers are protruding. A white bag is also visible on top of the pack. The background is a dense forest of tall, thin trees, with sunlight filtering through the leaves, creating a warm, golden glow. The overall scene suggests a hunting or outdoor adventure.

CLASSIC HUNTING

ENDURING LEGACY AND TIMELESS STYLE

THE 110 FAMILY

There's a reason the 110 has been one of our best sellers since it was created in 1964. This tried and true classic continues to perform without fail year in and year out.

110 FOLDING HUNTER®



BLADE
Clip point, 420HC steel
BLADE LENGTH
3.75" (9.53 cm)
BLADE THICKNESS
0.120" (0.305 cm)
CLOSED LENGTH
4.875" (12.38 cm)
WEIGHT
7.20 oz (204.00 g)
HANDLE
Crelicam™ genuine ebony, regular or finger grooved with brass bolsters
SHEATH
Black, genuine leather, imported

GENUINE
EBONY
HANDLE

STANDARD FINGER GROOVED | **BOX** MODEL 0110BRS-B CATALOG 9210 | **CLAM** MODEL 0110BRS-C CATALOG 1268
BOX MODEL 0110BRSG-B CATALOG 2538

110 AUTO



BLADE
Clip point, 420HC steel
BLADE LENGTH
3.75" (9.53 cm)
BLADE THICKNESS
0.120" (0.305 cm)
CLOSED LENGTH
4.875" (12.40 cm)
WEIGHT
7.10 oz (201.30 g)
HANDLE
Crelicam™ genuine ebony, with brass bolsters
SHEATH
Black genuine leather, made in the USA

AUTOMATIC
ENGAGES WITH THE
PUSH OF A BUTTON
GENUINE
EBONY
HANDLE

BOX MODEL 0110BRSA-B CATALOG 11197

The sale of automatic knives is federally regulated. See page 90 for details.

110 AUTO ELITE



BLADE
Clip point, S30V steel
BLADE LENGTH
3.75" (9.53 cm)
BLADE THICKNESS
0.120" (0.305 cm)
CLOSED LENGTH
4.875" (12.40 cm)
WEIGHT
7.30 oz (206.95 g)
HANDLE
Black G10 with brushed nickel silver bolsters
SHEATH
Black genuine leather, made in the USA

AUTOMATIC
ENGAGES WITH THE
PUSH OF A BUTTON

BOX MODEL 0110BKSA-B CATALOG 11667

The sale of automatic knives is federally regulated. See page 90 for details.

110 FOLDING HUNTER® LT



BLADE
Clip point, 420HC steel
BLADE LENGTH
3.75" (9.53 cm)
BLADE THICKNESS
0.120" (0.305 cm)
CLOSED LENGTH
4.875" (12.40 cm)
WEIGHT
3.20 oz (90.70 g)
HANDLE
Black glass filled nylon
SHEATH
Black, heavy-duty polyester, imported

BOX MODEL 0110BKSLT-B CATALOG 11553 | **CLAM** MODEL 0110BKSLT-C CATALOG 11554



CLASSIC HUNTING



AN INVENTIVE SOLUTION, FORGED IN NECESSITY

THE 112 FAMILY

After a scuffle on an aircraft carrier in 1972 led to a ban on larger blades being carried aboard ship, the 112 Ranger was added to fit the new requirements. Since then, the 112 Ranger's smaller size has developed a dedicated following and remains one of our best sellers of all time.

LOCKBACK DESIGN

BRASS BOLSTERS & HANDLE RIVETS

GENUINE EBONY HANDLE

GENUINE LEATHER SHEATH

3" CLIP POINT BLADE



112 RANGER



GENUINE EBONY HANDLE

STANDARD FINGERGROOVED

BOX MODEL 0112BRS-B CATALOG 2632
BOX MODEL 0112BRSFG-B CATALOG 2539

CLAM MODEL 0112BRS-C CATALOG 1264



BLADE
Clip point, 420HC steel
BLADE LENGTH
3.00" (7.60 cm)
BLADE THICKNESS
0.120" (0.305 cm)
CLOSED LENGTH
4.25" (10.80 cm)
WEIGHT
5.60 oz (159.40 g)
HANDLE
Crelicam™ genuine ebony, regular or finger grooved with brass bolsters
SHEATH
Black genuine leather, imported

112 AUTO



AUTOMATIC ENGAGES WITH THE PUSH OF A BUTTON
GENUINE EBONY HANDLE

BOX MODEL 0112BRSA-B CATALOG 11894

The sale of automatic knives is federally regulated. See page 90 for details.



BLADE
Clip point, 420HC steel
BLADE LENGTH
3.00" (7.60 cm)
BLADE THICKNESS
0.120" (0.305 cm)
CLOSED LENGTH
4.25" (10.80 cm)
WEIGHT
5.90 oz (167.30 g)
HANDLE
Crelicam™ genuine ebony with brass bolsters
SHEATH
Black genuine leather, made in the USA

112 AUTO ELITE



AUTOMATIC ENGAGES WITH THE PUSH OF A BUTTON

BOX MODEL 0112BKSA-B CATALOG 11895

The sale of automatic knives is federally regulated. See page 90 for details.



BLADE
Clip point, S30V steel
BLADE LENGTH
3.00" (7.60 cm)
BLADE THICKNESS
0.120" (0.305 cm)
CLOSED LENGTH
4.25" (10.80 cm)
WEIGHT
6.10 oz (172.90 g)
HANDLE
Black G10 with brushed nickel silver bolsters
SHEATH
Black genuine leather, made in the USA



TIMELESS QUALITY, MODERN PERFORMANCE
THE 100 PRO SERIES

Experience the time-honored Buck craftsmanship that has earned your trust for decades, now elevated with top-tier S35VN blade steel and natural canvas micarta handles. We've upgraded our most sought-after fixed blades with modern materials.

ALUMINUM
GUARD & POMMEL

NATURAL CANVAS
MICARTA HANDLE

GENUINE
LEATHER
SHEATH



102 BUCK WOODSMAN® PRO



BOX MODEL 102GRS1-B CATALOG 13109

103 SKINNER PRO



BOX MODEL 0103GRS1-B CATALOG 13108

105 PATHFINDER® PRO



BOX MODEL 0105GRS1-B CATALOG 13107

117 BRAHMA PRO



BOX MODEL 0117GRS-B CATALOG 13455

119 SPECIAL® PRO



BOX MODEL 0119GRS1-B CATALOG 13105

120 GENERAL® PRO



BOX MODEL 0120GRS1-B CATALOG 13104



BLADE
 102: Clip point, S35VN steel
 103: Extra wide skinner, S35VN steel
 105: Modified clip point, S35VN steel
 117: Clip point, S35VN steel
 119: Clip point, S35VN steel
 120: Clip point, S35VN steel

BLADE LENGTH
 102: 4.00" (10.20 cm)
 103: 4.00" (10.20 cm)
 105: 5.00" (12.70 cm)
 117: 4.50" (11.40 cm)
 119: 6.00" (15.20 cm)
 120: 7.375" (18.70 cm)

BLADE THICKNESS
 102: 0.120" (0.305 cm)
 103: 0.120" (0.305 cm)
 105: 0.120" (0.305 cm)
 117: 0.120" (0.305 cm)
 119: 0.175" (0.445 cm)
 120: 0.175" (0.445 cm)

OVERALL LENGTH
 102: 7.75" (19.70 cm)
 103: 8.25" (20.90 cm)
 105: 9.125" (23.20 cm)
 117: 8.75" (22.00 cm)
 119: 10.50" (26.70 cm)
 120: 12.00" (30.40 cm)

WEIGHT
 102: 2.60 oz (73.70 g)
 103: 4.30 oz (121.90 g)
 105: 4.30 oz (121.90 g)
 117: 4.90 oz (139.00 g)
 119: 7.70 oz (218.30 g)
 120: 8.30 oz (235.30 g)

HANDLE
 O.D. green canvas micarta handle

SHEATH
 Black genuine leather, imported



ICONIC RESILIENCE WITH ENDURING EXCELLENCE

THE CLASSIC 100 SERIES

When you hold one of the Buck 100 Series knives in your hand, you're not just gripping a knife; you're holding a legendary piece of American craftsmanship that has stood the test of time. For a good reason, these iconic fixed blades have been trusted companions for outdoors enthusiasts, hunters, and sportsmen for generations.



102 BUCK WOODSMAN®



BOX MODEL 0102BKS-B CATALOG 2628 | CLAM MODEL 0102BKS-C CATALOG 1271

103 SKINNER



BOX MODEL 0103BKS-B CATALOG 2659

105 PATHFINDER®



BOX MODEL 0105BKS-B CATALOG 2535 | CLAM MODEL 0105BKS-C CATALOG 1272

117 BRAHMA



BOX MODEL 0117BKS-B CATALOG 13453 | CLAM MODEL 0117BKS-C CATALOG 13454

119 SPECIAL®



BOX MODEL 0119BKS-B CATALOG 9207 | CLAM MODEL 0119BKS-C CATALOG 1273

120 GENERAL®



BOX MODEL 0120BKS-B CATALOG 2542 | CLAM MODEL 0120BKS-C CATALOG 3478



BLADE
 102: Clip point, 420HC steel
 103: Extra wide skinner, 420HC steel
 105: Modified clip point, 420HC steel
 117: Clip point, 420HC steel
 119: Clip point, 420HC steel
 120: Clip point, 420HC steel

BLADE LENGTH
 102: 4.00" (10.20 cm)
 103: 4.00" (10.20 cm)
 105: 5.00" (12.70 cm)
 117: 4.50" (11.40 cm)
 119: 6.00" (15.20 cm)
 120: 7.375" (18.70 cm)

BLADE THICKNESS
 102: 0.120" (0.305 cm)
 103: 0.120" (0.305 cm)
 105: 0.120" (0.305 cm)
 117: 0.120" (0.305 cm)
 119: 0.175" (0.445 cm)
 120: 0.175" (0.445 cm)

OVERALL LENGTH
 102: 7.75" (19.70 cm)
 103: 8.25" (20.90 cm)
 105: 9.125" (23.20 cm)
 117: 8.75" (22.00 cm)
 119: 10.50" (26.70 cm)
 120: 12.00" (30.40 cm)

WEIGHT
 102: 2.60 oz (73.70 g)
 103: 4.30 oz (121.90 g)
 105: 4.30 oz (121.90 g)
 117: 4.90 oz (139.00 g)
 119: 7.50 oz (213.50 g)
 120: 8.30 oz (235.30 g)

HANDLE
 Black phenolic handle

SHEATH
 Black genuine leather, imported

 **113 RANGER SKINNER**



BLADE
Drop point, 420HC steel
BLADE LENGTH
3.125" (7.90 cm)
BLADE THICKNESS
0.120" (0.305 cm)
OVERALL
7.25" (18.40 cm)
WEIGHT
5.20 oz (147.40 g)
HANDLE
Crellicam™ genuine
ebony with brass bolster
SHEATH
Black genuine
leather, imported
FEATURE
Lanyard hole

BOX MODEL 0113BRS-B CATALOG 3538 | **CLAM** MODEL 0113BRS-C CATALOG 3597

GENUINE
EBONY
HANDLE



 **192 VANGUARD**



BLADE
Drop point, 420HC steel
BLADE LENGTH
4.125" (10.50 cm)
BLADE THICKNESS
0.140" (0.356 cm)
OVERALL
8.50" (21.60 cm)
WEIGHT
6.30 oz (179.40 g)
HANDLE
DymaLux® Walnut with polished
brass pommel and guard
SHEATH
Brown genuine leather, imported

BOX MODEL 0192BRS-B CATALOG 2584

 **191 BUCK ZIPPER**



BLADE
Guthook, 420HC steel
BLADE LENGTH
4.125" (10.50 cm)
BLADE THICKNESS
0.140" (0.356 cm)
OVERALL
8.50" (21.60 cm)
WEIGHT
6.30 oz (179.40 g)
HANDLE
DymaLux® Walnut with polished
brass pommel and guard
SHEATH
Brown genuine leather, imported

BOX MODEL 0191BRG-B CATALOG 2550

 **692 VANGUARD**



BLADE
Drop point, 420HC steel
BLADE LENGTH
4.125" (10.50 cm)
BLADE THICKNESS
0.140" (0.356 cm)
OVERALL
8.50" (21.60 cm)
WEIGHT
6.60 oz (187.90 g)
HANDLE
Textured rubber with brass
pommel and guard
SHEATH
Black heavy-duty polyester,
imported

BOX MODEL 0692BKS-B CATALOG 2615

 **691 BUCK ZIPPER**



BLADE
Guthook, 420HC steel
BLADE LENGTH
4.125" (10.50 cm)
BLADE THICKNESS
0.140" (0.356 cm)
OVERALL
8.50" (21.60 cm)
WEIGHT
6.60 oz (187.90 g)
HANDLE
Textured rubber with brass
pommel and guard
SHEATH
Black heavy-duty polyester,
imported

BOX MODEL 0691BKG-B CATALOG 2607

MODERN HUNTING



YOUR NEW FAVORITE HUNTING KNIVES
THE ALPHA SERIES

Now available in three tiers, and four model types, the Alpha Series knives are ready for any task. With options in MagnaCut, S35VN, and 420HC, there is a steel type that fits every hunter's needs.



NEW 662 ALPHA SCOUT ELITE



BOX MODEL 0662BKS-B CATALOG13782



BLADE
Drop point flat grind blade with jimping, MagnaCut steel
BLADE LENGTH
2.875" (7.30 cm)
BLADE THICKNESS
0.140" (0.356 cm)
OVERALL
6.50" (16.51 cm)
WEIGHT
3.10 oz (87.90 g)
HANDLE
Black machine textured G10
SHEATH
Black Kydex with belt loop attachment for multiple carry options, imported

NEW 663 ALPHA GUIDE ELITE



BOX MODEL 0663BKS-B CATALOG13783



BLADE
Drop point flat grind blade with jimping, MagnaCut steel
BLADE LENGTH
4.375" (11.11 cm)
BLADE THICKNESS
0.140" (0.356 cm)
OVERALL
9.00" (22.86 cm)
WEIGHT
5.40 oz (153.10 g)
HANDLE
Black machine textured G10
SHEATH
Black Kydex with belt loop attachment for multiple carry options, imported

NEW 664 ALPHA HUNTER® ELITE



BOX MODEL 0664BKS-B CATALOG13784



BLADE
Drop point flat grind blade with jimping, MagnaCut steel
BLADE LENGTH
3.75" (9.53 cm)
BLADE THICKNESS
0.140" (0.356 cm)
OVERALL
8.125" (20.64 cm)
WEIGHT
5.20 oz (147.40 g)
HANDLE
Black machine textured G10
SHEATH
Black Kydex with belt loop attachment for multiple carry options, imported

 **662 ALPHA SCOUT PRO**



BLADE
Drop point flat grind blade with jimping, S35VN steel

BLADE LENGTH
2.875" (7.30 cm)

BLADE THICKNESS
0.140" (0.356 cm)

OVERALL
6.50" (16.51 cm)

WEIGHT
2.79 oz (79.10 g)

HANDLE
Machine textured Richlite or walnut DymaLux®

SHEATH
Burgundy genuine leather, made in the USA

RICHLITE | **BOX** MODEL 0662BRS-B CATALOG 13463
WALNUT | **BOX** MODEL 0662WAS-B CATALOG 13464

 **NEW** **663 ALPHA GUIDE PRO**



BLADE
Drop point flat grind blade with jimping, S35VN steel

BLADE LENGTH
4.375" (11.11 cm)

BLADE THICKNESS
0.140" (0.356 cm)

OVERALL
9.00" (22.86 cm)

WEIGHT
5.00 oz (141.70 g)

HANDLE
Machine textured Richlite or walnut DymaLux®

SHEATH
Burgundy genuine leather, made in the USA

RICHLITE | **BOX** MODEL 0663BRS-B CATALOG 13622
WALNUT | **BOX** MODEL 0663WAS-B CATALOG 13623

 **664 ALPHA HUNTER® PRO**



BLADE
Drop point flat grind blade with jimping, S35VN steel

BLADE LENGTH
3.625" (9.21 cm)

BLADE THICKNESS
0.140" (0.356 cm)

OVERALL
8.125" (20.64 cm)

WEIGHT
4.59 oz (130.10 g)

HANDLE
Machine textured Richlite or walnut DymaLux®

SHEATH
Burgundy genuine leather, made in the USA

RICHLITE | **BOX** MODEL 0664BRS-B CATALOG 13465
WALNUT | **BOX** MODEL 0664WAS-B CATALOG 13466



 **NEW** 662 ALPHA SCOUT SELECT



BLADE
Drop point hollow grind blade with jimping, 420HC steel

BLADE LENGTH
2.875" (7.30 cm)

BLADE THICKNESS
0.140" (0.356 cm)

OVERALL
6.50" (16.51 cm)

WEIGHT
2.90 oz (82.10 g)

HANDLE
Glass filled nylon with Versaflex

SHEATH
Black polyester with leather accents, imported

GRAY | **BOX** MODEL 0662GYS-B CATALOG 13730 | **CLAM** MODEL 0662GYS-C CATALOG 13731
ORANGE | **BOX** MODEL 0662ORS-B CATALOG 13722 | **CLAM** MODEL 0662ORS-C CATALOG 13723

 **NEW** 664 ALPHA HUNTER® SELECT



BLADE
Drop point hollow grind blade with jimping, 420HC steel

BLADE LENGTH
3.625" (9.21 cm)

BLADE THICKNESS
0.140" (0.356 cm)

OVERALL
8.375" (21.27 cm)

WEIGHT
4.85 oz (137.50 g)

HANDLE
Glass filled nylon with Versaflex

SHEATH
Black polyester with leather accents, imported

GRAY | **BOX** MODEL 0664GYS-B CATALOG 13736 | **CLAM** MODEL 0664GYS-C CATALOG 13737
ORANGE | **BOX** MODEL 0664ORS-B CATALOG 13728 | **CLAM** MODEL 0664ORS-C CATALOG 13729

 **NEW** 663 ALPHA GUIDE SELECT



BLADE
Drop point hollow grind blade with jimping, 420HC steel

BLADE LENGTH
4.375" (11.11 cm)

BLADE THICKNESS
0.140" (0.356 cm)

OVERALL
9.125" (23.18 cm)

WEIGHT
5.05 oz (143.20 g)

HANDLE
Glass filled nylon with Versaflex

SHEATH
Black polyester with leather accents, imported

GRAY | **BOX** MODEL 0663GYS-B CATALOG 13732 | **CLAM** MODEL 0663GYS-C CATALOG 13733
ORANGE | **BOX** MODEL 0663ORS-B CATALOG 13724 | **CLAM** MODEL 0663ORS-C CATALOG 13725

 **NEW** 664 ALPHA HUNTER® SELECT - GUTHOOK



BLADE
Guthook hollow grind blade with jimping, 420HC steel

BLADE LENGTH
3.75" (9.53 cm)

BLADE THICKNESS
0.140" (0.356 cm)

OVERALL
8.375" (21.27 cm)

WEIGHT
4.85 oz (137.50 g)

HANDLE
Glass filled nylon with Versaflex

SHEATH
Black polyester with leather accents, imported

GRAY | **BOX** MODEL 0664GYG-B CATALOG 13734 | **CLAM** MODEL 0664GYG-C CATALOG 13735
ORANGE | **BOX** MODEL 0664ORG-B CATALOG 13726 | **CLAM** MODEL 0664ORG-C CATALOG 13727

MAXIMUM PERFORMANCE, MINIMAL WEIGHT

THE PAKLITE SERIES

The PakLites are made light for heavy outdoor use. Featuring full tang, skeletonized construction with minimalist removable handles, these purpose-built blades are for the hunters who count every ounce in their packs.

 **NEW** 631 & 635 PAKLITE FIELD KIT



KNIVES
631 PakLite Field
635 PakLite Cape

OVERALL LENGTH
8.25" (20.96 cm)

OVERALL THICKNESS
1.00" (2.54 cm)

SHEATHS
Black polypropylene, imported

BLACK PAKLITES **BOX** MODEL 0631BKSVP-B CATALOG 13819
ORANGE PAKLITES **BOX** MODEL 0631ORSVP-B CATALOG 13820
O.D. GREEN PAKLITE PROS **BOX** MODEL 0631GRSVP-B CATALOG 13821

 **NEW** 630 PAKLITE HIDE PRO



BOX MODEL 0630GRS-B CATALOG 13498



BLADE
Drop point, S35VN steel

BLADE LENGTH
2.75" (6.990 cm)

BLADE THICKNESS
0.110" (0.279 cm)

OVERALL
6.75" (17.15 cm)

WEIGHT
1.76 oz (49.90 g)

HANDLE
O.D. green micarta

SHEATH
Black polypropylene, imported

 **NEW** 631 PAKLITE FIELD PRO



BOX MODEL 0631GRS-B CATALOG 13503



BLADE
Skinner, S35VN steel

BLADE LENGTH
4.00" (10.16 cm)

BLADE THICKNESS
0.150" (0.38 cm)

OVERALL
8.25" (20.96 cm)

WEIGHT
3.03 oz (85.90 g)

HANDLE
O.D. green micarta

SHEATH
Black polypropylene, imported

 **NEW** 635 PAKLITE CAPE PRO



BOX MODEL 0635GRS-B CATALOG 13508



BLADE
Drop point, S35VN steel

BLADE LENGTH
2.75" (6.99 cm)

BLADE THICKNESS
0.110" (0.279 cm)

OVERALL
7.125" (18.10 cm)

WEIGHT
1.59 oz (45.08 g)

HANDLE
O.D. green micarta

SHEATH
Black polypropylene, imported

 **NEW** 636 PAKLITE PROCESSOR PRO



BOX MODEL 0636GRS-B CATALOG 13513



BLADE
Boning, S35VN steel

BLADE LENGTH
5.75" (14.61 cm)

BLADE THICKNESS
0.150" (0.381 cm)

OVERALL
9.50" (24.13 cm)

WEIGHT
2.82 oz (79.95 g)

HANDLE
O.D. green micarta

SHEATH
Black polypropylene, imported



 **NEW** 630 PAKLITE HIDE SELECT



BLADE
Drop point, 420HC steel
BLADE LENGTH
2.75" (6.99 cm)
BLADE THICKNESS
0.110" (0.279 cm)
OVERALL
6.75" (17.15 cm)
WEIGHT
1.76 oz (49.90 g)
HANDLE
Glass filled nylon
SHEATH
Black polypropylene,
imported

BLACK | BOX MODEL 0630BKS-B CATALOG13496 | CLAM MODEL 0630BKS-C CATALOG13497
ORANGE | BOX MODEL 0630ORS-B CATALOG13499 | CLAM MODEL 0630ORS-C CATALOG13500

 **NEW** 635 PAKLITE CAPE SELECT



BLADE
Drop point, 420HC steel
BLADE LENGTH
2.75" (6.99 cm)
BLADE THICKNESS
0.110" (0.279 cm)
OVERALL
7.125" (18.10 cm)
WEIGHT
1.59 oz (45.08 g)
HANDLE
Glass filled nylon
SHEATH
Black polypropylene,
imported

BLACK | BOX MODEL 0635BKS-B CATALOG13506 | CLAM MODEL 0635BKS-C CATALOG13507
ORANGE | BOX MODEL 0635ORS-B CATALOG13509 | CLAM MODEL 0635ORS-C CATALOG13510

 **NEW** 631 PAKLITE FIELD SELECT



BLADE
Skinner, 420HC steel
BLADE LENGTH
4.00" (10.16 cm)
BLADE THICKNESS
0.150" (0.381 cm)
OVERALL
8.25" (20.96 cm)
WEIGHT
3.10 oz (87.88 g)
HANDLE
Glass filled nylon
SHEATH
Black polypropylene,
imported

BLACK | BOX MODEL 0631BKS-B CATALOG13501 | CLAM MODEL 0631BKS-C CATALOG13502
ORANGE | BOX MODEL 0631ORS-B CATALOG13504 | CLAM MODEL 0631ORS-C CATALOG13505

 **NEW** 636 PAKLITE PROCESSOR SELECT



BLADE
Boning, 420HC steel
BLADE LENGTH
5.75" (14.61 cm)
BLADE THICKNESS
0.150" (0.38 cm)
OVERALL
9.50" (24.13 cm)
WEIGHT
2.82 oz (79.95 g)
HANDLE
Glass filled nylon
SHEATH
Black polypropylene,
imported

BLACK | BOX MODEL 0636BKS-B CATALOG13511 | CLAM MODEL 0636BKS-C CATALOG13512
ORANGE | BOX MODEL 0636ORS-B CATALOG13514 | CLAM MODEL 0636ORS-C CATALOG13515



RUGGED AND RELIABLE

THE PURSUIT PROS

The Pursuit Pros are all about performance. Built with S35VN steel blades, they hold an edge in the field while requiring less sharpening. The handles are made to last, and offer a comfortable, sure grip in all conditions. The Pursuit Pros will assist when hard work is in front of you.

S35VN STEEL

CHOOSE FROM FIXED OR FOLDING MODELS

DROP POINT AND GUTHOOK BLADES AVAILABLE



HIGH VISIBILITY, CONTOURED, SURE GRIP HANDLE

656 PURSUIT PRO LARGE



BOX MODEL 06560RS-B CATALOG 12751

657 PURSUIT PRO LARGE GUTHOOK



BOX MODEL 06570RG-B CATALOG 12752

658 PURSUIT PRO SMALL



BOX MODEL 06580RS-B CATALOG 12753

659 FOLDING PURSUIT PRO LARGE



BOX MODEL 06590RS-B CATALOG 12754

660 FOLDING PURSUIT PRO LARGE GUTHOOK



BOX MODEL 06600RG-B CATALOG 12755

661 FOLDING PURSUIT PRO SMALL



BOX MODEL 06610RS-B CATALOG 12756



656, 657, 658



659, 660, 661

BLADE
 656: Drop point, S35VN steel
 657: Guthook, S35VN steel
 658: Drop point, S35VN steel
 659: Drop point, S35VN steel
 660: Guthook, S35VN steel
 661: Drop point, S35VN steel

BLADE LENGTH
 656: 4.50" (11.40 cm)
 657: 4.50" (11.40 cm)
 658: 3.75" (9.50 cm)
 659: 3.625" (9.20 cm)
 660: 3.50" (9.20 cm)
 661: 3.00" (7.60 cm)

BLADE THICKNESS
 656: 0.140" (0.356 cm)
 657: 0.140" (0.356 cm)
 658: 0.100" (0.254 cm)
 659: 0.120" (0.305 cm)
 660: 0.120" (0.305 cm)
 661: 0.120" (0.305 cm)

OVERALL LENGTH
 656: 9.50" (24.10 cm)
 657: 9.50" (24.10 cm)
 658: 8.00" (20.30 cm)

CLOSED LENGTH
 659: 5.00" (12.70 cm)
 660: 5.00" (12.70 cm)
 661: 4.375" (11.10 cm)

WEIGHT
 656: 6.40 oz (181.50 g)
 657: 6.40 oz (181.50 g)
 658: 3.30 oz (93.50 g)
 659: 3.80 oz (107.70 g)
 660: 3.60 oz (102.00 g)
 661: 2.50 oz (72.00 g)

HANDLE
 Glass filled nylon with Versaflex

SHEATH
 Black heavy-duty polyester, imported



BUDGET-FRIENDLY FOR ANY CUSTOMER

THE PURSUITS

Made for the no-nonsense hunter who doesn't want to sacrifice reliability for price. These knives are designed to be your workhorse in the field. They feature Buck's tried and true 420HC steel that has a great combination of toughness and edge retention. The handles are made to last and offer a comfortable, sure grip in all conditions.

DROP POINT AND GUTHOOK
BLADES AVAILABLE

420HC STEEL

CHOOSE FROM FIXED
OR FOLDING MODELS

CONTOURED,
SURE GRIP HANDLE



656 PURSUIT LARGE



BOX MODEL 0656GRS-B CATALOG 11889 | CLAM MODEL 0656GRS-C CATALOG 11908

657 PURSUIT LARGE GUTHOOK



BOX MODEL 0657GRG-B CATALOG 11890 | CLAM MODEL 0657GRG-C CATALOG 12224

658 PURSUIT SMALL



BOX MODEL 0658GRS-B CATALOG 11891 | CLAM MODEL 0658GRS-C CATALOG 11909

659 FOLDING PURSUIT LARGE



BOX MODEL 0659GRS-B CATALOG 11892 | CLAM MODEL 0659GRS-C CATALOG 11979

660 FOLDING PURSUIT LARGE GUTHOOK



BOX MODEL 0660GRG-B CATALOG 12256 | CLAM MODEL 0660GRG-C CATALOG 12257

661 FOLDING PURSUIT SMALL



BOX MODEL 0661GRS-B CATALOG 11893 | CLAM MODEL 0661GRS-C CATALOG 11982



656, 657, 658



659, 660, 661

BLADE

656: Drop point, 420HC steel
657: Guthook, 420HC steel
658: Drop point, 420HC steel
659: Drop point, 420HC steel
660: Guthook, 420HC steel
661: Drop point, 420HC steel

BLADE LENGTH

656: 4.50" (11.40 cm)
657: 4.50" (11.40 cm)
658: 3.75" (9.50 cm)
659: 3.625" (9.21 cm)
660: 3.50" (8.89 cm)
661: 3.00" (7.60 cm)

BLADE THICKNESS

656: 0.140" (0.356 cm)
657: 0.140" (0.356 cm)
658: 0.100" (0.279 cm)
659: 0.120" (0.305 cm)
660: 0.120" (0.305 cm)
661: 0.120" (0.305 cm)

OVERALL LENGTH

656: 9.50" (24.10 cm)
657: 9.50" (24.13 cm)
658: 8.00" (20.32 cm)

CLOSED LENGTH

659: 5.00" (12.70 cm)
660: 5.00" (12.70 cm)
661: 4.375" (11.10 cm)

WEIGHT

656: 6.40 oz (181.50 g)
657: 6.40 oz (181.50 g)
658: 3.30 oz (93.51 g)
659: 3.80 oz (107.70 g)
660: 3.60 oz (102.00 g)
661: 2.50 oz (72.00 g)

HANDLE

Glass filled nylon with Versaflex

SHEATH

Black, heavy-duty polyester with green accents, imported



MADE IN THE USA VALUE

THE BUCKLITE MAX II

An excellent choice for the hunter on a budget who values a made-in-the-USA knife. With a similar blade shape to our classic Vanguard knives, the BuckLite Max II is a stripped-down version of the classic with an ergonomic rubber handle and a high level of performance.

FULL TANG CONSTRUCTION FOR ADDED STRENGTH

SPINE JIMMING FOR DETAILED CONTROL

LIGHT WEIGHT, RUBBER HANDLE FOR SUPERIOR GRIP

420HC STEEL



684 BUCKLITE MAX® II SMALL



BOX MODEL 0684BKS-B CATALOG 11557 | CLAM MODEL 0684BKS-C CATALOG 11558



BLADE
Drop point, 420HC steel
BLADE LENGTH
3.25" (8.26 cm)
BLADE THICKNESS
0.090" (0.23 cm)
OVERALL
7.50" (19.10 cm)
WEIGHT
2.80 oz (79.38 g)
HANDLE
Dynaflex® rubber
SHEATH
Black heavy-duty polyester, imported

685 BUCKLITE MAX® II LARGE



BOX MODEL 0685BKS-B CATALOG 11559 | CLAM MODEL 0685BKS-C CATALOG 11560



BLADE
Drop point, 420HC steel
BLADE LENGTH
4.00" (10.16 cm)
BLADE THICKNESS
0.110" (0.279 cm)
OVERALL
8.875" (22.54 cm)
WEIGHT
4.70 oz (133.20 g)
HANDLE
Dynaflex® rubber
SHEATH
Black heavy-duty polyester, imported

685 BUCKLITE MAX® II LARGE GUTHOOK



BOX MODEL 0685BKG-B CATALOG 11768 | CLAM MODEL 0685BKG-C CATALOG 11769



BLADE
Guthook, 420HC steel
BLADE LENGTH
4.00" (10.16 cm)
BLADE THICKNESS
0.110" (0.279 cm)
OVERALL
8.875" (22.54 cm)
WEIGHT
4.70 oz (133.20 g)
HANDLE
Dynaflex® rubber
SHEATH
Black heavy-duty polyester, imported

LIGHTWEIGHT AND AFFORDABLE

THE BANTAM SERIES

The sleek, lightweight Bantam was designed as a pocket knife that can meet the demands of a hunter in the field or in their daily life.

284 BANTAM® BBW



BLADE
Drop point, 420HC steel
BLADE LENGTH
2.75" (7.00 cm)
BLADE THICKNESS
0.100" (0.254 cm)
CLOSED LENGTH
3.75" (9.50 cm)
WEIGHT
1.50 oz (42.70 g)
HANDLE
Glass reinforced textured nylon
CARRY
Pocket (no clip)

BLACK	BOX	MODEL 0284BKS-B	CATALOG 5759	CLAM	MODEL 0284BKS-C	CATALOG 5760
MOSSY OAK® BLAZE ORANGE CAMO	BOX	MODEL 0284CMS9-B	CATALOG 3893	CLAM	MODEL 0284CMS9-C	CATALOG 3894
MOSSY OAK® BREAK-UP COUNTRY CAMO	BOX	MODEL 0284CMS24-B	CATALOG 10315	CLAM	MODEL 0284CMS24-C	CATALOG 10316

285 BANTAM® BLW



BLADE
Drop point, 420HC steel
BLADE LENGTH
3.125" (7.94 cm)
BLADE THICKNESS
0.120" (0.305 cm)
CLOSED LENGTH
4.375" (11.10 cm)
WEIGHT
2.40 oz (68.04 g)
HANDLE
Glass reinforced textured nylon
CLIP
Removable, stainless steel

BLACK	BOX	MODEL 0285BKS-B	CATALOG 5761	CLAM	MODEL 0285BKS-C	CATALOG 5762
MOSSY OAK® BLAZE ORANGE CAMO	BOX	MODEL 0285CMS9-B	CATALOG 3895	CLAM	MODEL 0285CMS9-C	CATALOG 3896
MOSSY OAK® BREAK-UP COUNTRY CAMO	BOX	MODEL 0285CMS24-B	CATALOG 10610	CLAM	MODEL 0285CMS24-C	CATALOG 10611

286 BANTAM® BHW



BLADE
Drop point, 420HC steel
BLADE LENGTH
3.625" (9.20 cm)
BLADE THICKNESS
0.120" (0.305 cm)
CLOSED LENGTH
5.125" (13.00 cm)
WEIGHT
3.20 oz (90.72 g)
HANDLE
Glass reinforced textured nylon
CLIP
Removable, stainless steel

BLACK	BOX	MODEL 0286BKS-B	CATALOG 5763	CLAM	MODEL 0286BKS-C	CATALOG 5764
MOSSY OAK® BLAZE ORANGE CAMO	BOX	MODEL 0286CMS9-B	CATALOG 3897	CLAM	MODEL 0286CMS9-C	CATALOG 3898
MOSSY OAK® BREAK-UP COUNTRY CAMO	BOX	MODEL 0286CMS24-B	CATALOG 10317	CLAM	MODEL 0286CMS24-C	CATALOG 10318





**EVERYDAY
CARRY**



PUSH BUTTON AUTOMATIC OPENERS

THE DEPLOY SERIES

The Deploy Series is a new customer favorite. With its push button automatic deployment and sleek design, these knives are crafted to be used for everyday carry.

S35VN OR 154CM STEEL

SAFETY SWITCH
(838 ONLY)

PUSH-BUTTON
DEPLOYMENT

CERAKOTED
ALUMINUM
FRAMES

DEEP CARRY
POCKET CLIP



NEW 838 DEPLOY - WHARNCLIFFE BLADE



BLADE
Wharncliffe
838BKS1: Cerakoted
S35VN steel
838BLS, 838ORS:
154CM steel
BLADE LENGTH
3.125" (7.90 cm)
BLADE THICKNESS
0.120" (0.305 cm)
CLOSED LENGTH
5.00" (12.70 cm)
WEIGHT
4.70 oz (133.00 g)
HANDLE
Cerakoted aluminum
with a button lock
CLIP
Black Cerakoted,
removable, reversible,
stainless steel



BLACKOUT	BOX	MODEL 0838BKS1-B	CATALOG 13712
BLUE	BOX	MODEL 0838BLS-B	CATALOG 13600
ORANGE	BOX	MODEL 0838ORS-B	CATALOG 13601

The sale of automatic knives is federally regulated. See page 90 for details.

NEW 839 MINI DEPLOY - WHARNCLIFFE BLADE



BLADE
Wharncliffe
839BKS1: Cerakoted
S35VN steel
839BLS, 839ORS:
154CM steel
BLADE LENGTH
1.75" (4.40 cm)
BLADE THICKNESS
0.120" (0.305 cm)
CLOSED LENGTH
3.75" (9.50 cm)
WEIGHT
3.50 oz (99.00 g)
HANDLE
Cerakoted aluminum
with a button lock
CLIP
Black Cerakoted,
removable, reversible,
stainless steel



BLACKOUT	BOX	MODEL 0839BKS1-B	CATALOG 13713
BLUE	BOX	MODEL 0839BLS-B	CATALOG 13602
ORANGE	BOX	MODEL 0839ORS-B	CATALOG 13603

The sale of automatic knives is federally regulated. See page 90 for details.

 **838 DEPLOY BLACKOUT**



BLADE
Drop point,
Cerakoted S35VN steel

BLADE LENGTH
3.25" (8.30 cm)

BLADE THICKNESS
0.120" (0.305 cm)

CLOSED LENGTH
5.00" (12.70 cm)

WEIGHT
4.25 oz (121.00 g)

HANDLE
Cerakoted aluminum

CLIP
Black Cerakoted,
removable, reversible,
stainless steel



BOX MODEL 0838BKS-B CATALOG 13538

The sale of automatic knives is federally regulated. See page 90 for details.

 **838 DEPLOY**



BLADE
Drop point,
Cerakoted 154CM steel

BLADE LENGTH
3.25" (8.30 cm)

BLADE THICKNESS
0.120" (0.305 cm)

CLOSED LENGTH
5.00" (12.70 cm)

WEIGHT
4.25 oz (121.00 g)

HANDLE
Cerakoted aluminum

CLIP
Black Cerakoted,
removable, reversible,
stainless steel



GRAY | BOX MODEL 0838GYS1-B CATALOG 13444
BRONZE | BOX MODEL 0838BRS1-B CATALOG 13443

The sale of automatic knives is federally regulated. See page 90 for details.

 **839 MINI DEPLOY BLACKOUT**



BLADE
Drop point,
Cerakoted S35VN steel

BLADE LENGTH
1.875" (0.300 cm)

BLADE THICKNESS
0.120" (0.305 cm)

CLOSED LENGTH
3.75" (9.50 cm)

WEIGHT
3.20 oz (92.00 g)

HANDLE
Cerakoted aluminum

CLIP
Black Cerakoted,
removable, reversible,
stainless steel



BOX MODEL 0839BKS-B CATALOG 13539

The sale of automatic knives is federally regulated. See page 90 for details.

 **839 MINI DEPLOY**



BLADE
Drop point,
Cerakoted 154CM steel

BLADE LENGTH
1.875" (0.300 cm)

BLADE THICKNESS
0.120" (0.305 cm)

CLOSED LENGTH
3.75" (9.50 cm)

WEIGHT
3.20 oz (92.00 g)

HANDLE
Cerakoted aluminum

CLIP
Black Cerakoted,
removable, reversible,
stainless steel



GRAY | BOX MODEL 0839GYS1-B CATALOG 13446
BRONZE | BOX MODEL 0839BRS1-B CATALOG 13445

The sale of automatic knives is federally regulated. See page 90 for details.



 **110 SLIM PRO TRX**



BLADE
Clip point, S30V steel
BLADE LENGTH
3.75" (9.50 cm)
BLADE THICKNESS
0.118" (0.457 cm)
CLOSED LENGTH
5.00" (12.70 cm)
WEIGHT
3.30 oz (93.60 g)
HANDLE
Black, O.D. green, or orange G10
CLIP
Black Cerakoted, deep pocket carry, removable, reversible, stainless steel

BLACK	BOX	MODEL 0110BKS3-B	CATALOG 11880
O.D. GREEN	BOX	MODEL 0110GRS3-B	CATALOG 13262
ORANGE	BOX	MODEL 0110ORS3-B	CATALOG 13263

 **110 SLIM SELECT**



BLADE
Clip point, 420HC steel
BLADE LENGTH
3.75" (9.50 cm)
BLADE THICKNESS
0.120" (0.305 cm)
CLOSED LENGTH
4.875" (12.40 cm)
WEIGHT
2.80 oz (80.00 g)
HANDLE
Glass filled nylon
CLIP
Deep pocket carry, removable, reversible, stainless steel

BLACK	BOX	MODEL 0110BKS1-B	CATALOG 11878	CLAM	MODEL 0110BKS1-C	CATALOG 11964
O.D. GREEN	BOX	MODEL 0110DS2-B	CATALOG 12695	CLAM	MODEL 0110DS2-C	CATALOG 12696
ORANGE	BOX	MODEL 0110ORS2-B	CATALOG 12699	CLAM	MODEL 0110ORS2-C	CATALOG 12700

 **112 SLIM PRO TRX**



BLADE
Clip point, S30V steel
BLADE LENGTH
3.00" (7.60 cm)
BLADE THICKNESS
0.118" (0.457 cm)
CLOSED LENGTH
4.375" (11.10 cm)
WEIGHT
2.80 oz (79.30 g)
HANDLE
Black, O.D. green, or orange G10
CLIP
Black Cerakoted, deep pocket carry, removable, reversible, stainless steel

BLACK	BOX	MODEL 0112BKS3-B	CATALOG 11883
O.D. GREEN	BOX	MODEL 0112GRS3-B	CATALOG 13264
ORANGE	BOX	MODEL 0112ORS3-B	CATALOG 13265

 **112 SLIM SELECT**



BLADE
Clip point, 420HC steel
BLADE LENGTH
3.00" (7.60 cm)
BLADE THICKNESS
0.120" (0.305 cm)
CLOSED LENGTH
4.25" (10.80 cm)
WEIGHT
2.50 oz (71.00 g)
HANDLE
Glass filled nylon
CLIP
Deep pocket carry, removable, reversible, stainless steel

BLACK	BOX	MODEL 0112BKS1-B	CATALOG 11881	CLAM	MODEL 0112BKS1-C	CATALOG 11967
O.D. GREEN	BOX	MODEL 0112DS2-B	CATALOG 12689	CLAM	MODEL 0112DS2-C	CATALOG 12690
ORANGE	BOX	MODEL 0112ORS-B	CATALOG 12024	CLAM	MODEL 0112ORS-C	CATALOG 12025

 **110 FOLDING HUNTER® SPORT**



BOX MODEL 0110GRS5-B CATALOG 13294



BLADE
Clip point, S30V steel with thumbstuds

BLADE LENGTH
3.75" (9.53 cm)

BLADE THICKNESS
0.120" (0.305 cm)

CLOSED LENGTH
5.00" (12.70 cm)

WEIGHT
4.60 oz (132.00 g)

HANDLE
Black anodized aluminum with O.D. green canvas micarta inlay

CLIP
Black Cerakoted, deep pocket carry, removable, stainless steel

 **112 RANGER SPORT**



BOX MODEL 0112GRS5-B CATALOG 13295



BLADE
Clip point, S30V steel with thumbstuds

BLADE LENGTH
3.00" (7.60 cm)

BLADE THICKNESS
0.120" (0.305 cm)

CLOSED LENGTH
4.25" (10.80 cm)

WEIGHT
3.90 oz (112.00 g)

HANDLE
Black anodized aluminum with O.D. green canvas micarta inlay

CLIP
Black Cerakoted, deep pocket carry, removable, stainless steel

 **722 SPITFIRE**



BLACK	BOX MODEL 0722BKS1-B CATALOG 12237	CLAM MODEL 0722BKS1-C CATALOG 12238
GRAY	BOX MODEL 0722GYS1-B CATALOG 7449	CLAM MODEL 0722GYS1-C CATALOG 7450
ORANGE	BOX MODEL 0722ORS1-B CATALOG 7453	CLAM MODEL 0722ORS1-C CATALOG 7454



BLADE
Drop point, 420HC steel

BLADE LENGTH
3.25" (8.30 cm)

BLADE THICKNESS
0.120" (0.305 cm)

CLOSED LENGTH
4.25" (10.80 cm)

WEIGHT
3.20 oz (90.70 g)

HANDLE
Anodized aluminum

CLIP
Removable, reversible, four position

 **726 MINI SPITFIRE**



BLACK	BOX MODEL 0726BKS-B CATALOG 12243	CLAM MODEL 0726BKS-C CATALOG 12244
GRAY	BOX MODEL 0726GYS-B CATALOG 7800	CLAM MODEL 0726GYS-C CATALOG 7801
ORANGE	BOX MODEL 0726ORS-B CATALOG 7798	CLAM MODEL 0726ORS-C CATALOG 7799



BLADE
Drop point, 420HC steel

BLADE LENGTH
2.75" (7.00 cm)

BLADE THICKNESS
0.098" (0.249 cm)

CLOSED LENGTH
3.74" (9.50 cm)

WEIGHT
2.10 oz (59.50 g)

HANDLE
Anodized aluminum

CLIP
Removable, reversible, two position



SMOOTH BALL BEARING OPENING

THE SPRINT SERIES

The Sprint Series pocket knives are known for their incredibly smooth opening. Flick the flipper, and the ball bearings help the knife glide open.

843 SPRINT OPS



BLADE
Reverse tanto, Cerakoted
843CFS: S45VN
843BKS: S30V
843GRS: S30V
BLADE LENGTH
3.125" (7.94 cm)
BLADE THICKNESS
0.120" (0.305 cm)
CLOSED LENGTH
4.375" (11.11 cm)
WEIGHT
3.14 oz (89.10 g)
HANDLE
843CFS: Marbled carbon fiber
843BKS: Canvas micarta
843BRS: Burlap micarta
CLIP
Black Cerakoted, deep pocket carry, removable, reversible, stainless steel

CARBON FIBER | **BOX** MODEL 0843CFS-B CATALOG 13439
BLACK | **BOX** MODEL 0843BKS-B CATALOG 13438
O.D. GREEN | **BOX** MODEL 0843GRS-B CATALOG 13440

841 SPRINT PRO



BLADE
Drop point
841CFS2: S45VN
841BRS1: S30V
841TNS: S30V
BLADE LENGTH
3.125" (7.94 cm)
BLADE THICKNESS
0.120" (0.305 cm)
CLOSED LENGTH
4.375" (11.11 cm)
WEIGHT
3.40 oz (96.39 g)
HANDLE
841CFS2: Marbled carbon fiber
841BRS1: Burlap micarta
841TNS: Natural canvas micarta
CLIP
Black Cerakoted, deep pocket carry, removable, reversible, stainless steel

CARBON FIBER | **BOX** MODEL 0841CFS2-B CATALOG 13436
BROWN | **BOX** MODEL 0841BRS1-B CATALOG 13435
TAN | **BOX** MODEL 0841TNS-B CATALOG 13437

840 SPRINT SELECT



BLADE
Drop point, 420HC steel
BLADE LENGTH
3.125" (7.90 cm)
BLADE THICKNESS
0.120" (0.305 cm)
CLOSED LENGTH
4.375" (11.10 cm)
WEIGHT
3.20 oz (90.70 g)
HANDLE
Glass filled nylon
CLIP
Deep pocket carry, removable, stainless steel

BLACK | **BOX** MODEL 0840BKS1-B CATALOG 11896 | CLAM | **MODEL** 0840BKS1-C CATALOG 11981
GREEN | **BOX** MODEL 0840GRS-B CATALOG 12058 | CLAM | **MODEL** 0840GRS-C CATALOG 12059
BLUE | **BOX** MODEL 0840BLS-B CATALOG 12866 | CLAM | **MODEL** 0840BLS-C CATALOG 12867



 **040 ONSET**



BLADE
Full flat grind, drop point,
S45VN stainless steel
0040GRS: Cerakoted

BLADE LENGTH
3.375" (8.60 cm)

BLADE THICKNESS
0.120" (0.305 cm)

CLOSED LENGTH
4.875" (12.40 cm)

WEIGHT
4.90 oz (138.00 g)

HANDLE
Black or O.D. green
textured G10

CLIP
Removable
040BKS: Stonewashed
stainless steel
040GRS: Black nitride
stainless steel

BLACK | BOX MODEL 0040BKS-B CATALOG 13247
O.D. GREEN | BOX MODEL 0040GRS-B CATALOG 13425

 **250 SAUNTER - DROP POINT BLADE**



BLADE
Drop point, 154CM steel

BLADE LENGTH
2.375" (6.03 cm)

BLADE THICKNESS
0.100" (0.254 cm)

CLOSED LENGTH
3.75" (9.53 cm)

WEIGHT
2.30 oz (65.20 g)

HANDLE
Canvas micarta

CARRY
Pocket carry

BLACK | BOX MODEL 0250BKS-B CATALOG 13476
O.D. GREEN | BOX MODEL 0250GRS-B CATALOG 13478

 **250 SAUNTER - CLIP POINT BLADE**



BLADE
Clip point, 154CM steel

BLADE LENGTH
2.375" (6.03 cm)

BLADE THICKNESS
0.100" (0.254 cm)

CLOSED LENGTH
3.75" (9.53 cm)

WEIGHT
2.30 oz (65.20 g)

HANDLE
Canvas micarta

CARRY
Pocket carry

BLACK | BOX MODEL 0250BKS1-B CATALOG 13475
O.D. GREEN | BOX MODEL 0250GRS1-B CATALOG 13477



 **055 THE 55®**



BLADE
Clip point, 420HC steel
BLADE LENGTH
2.375" (6.00 cm)
BLADE THICKNESS
0.084" (0.213 cm)
CLOSED LENGTH
3.50" (8.90 cm)
WEIGHT
1.90 oz (54.10 g)
HANDLE
Crelicam™ genuine ebony with brass bolsters
CARRY
Pocket carry

GENUINE
EBONY
HANDLE

BOX MODEL 0055BRS-B CATALOG 5684 | **CLAM** MODEL 0055BRS-C CATALOG 5685

 **301 STOCKMAN®**



BLADE
Clip point, spey, and sheepsfoot, 420HC steel
CLOSED LENGTH
3.875" (9.80 cm)
WEIGHT
2.90 oz (82.60 g)
HANDLE
Black Valox™ with nickel silver bolsters
CARRY
Pocket carry

BOX MODEL 0301BKS-B CATALOG 2587
CLAM MODEL 0301BKS-C CATALOG 3271

 **303 CADET®**



BLADE
Clip point, spey, and sheepsfoot, 420HC steel
CLOSED LENGTH
3.25" (8.30 cm)
WEIGHT
1.90 oz (54.10 g)
HANDLE
Black Valox™ with nickel silver bolsters
CARRY
Pocket carry

BOX MODEL 0303BKS-B CATALOG 9203
CLAM MODEL 0303BKS-C CATALOG 1279

 **501 SQUIRE**



BLADE
Drop point, 420HC steel
BLADE LENGTH
2.75" (7.00 cm)
BLADE THICKNESS
0.096" (0.244 cm)
CLOSED LENGTH
3.75" (9.50 cm)
WEIGHT
3.00 oz (85.40 g)
HANDLE
DymaLux® red wood with nickel silver bolsters
SHEATH
Black genuine leather, imported

BOX MODEL 0501RWS-B CATALOG 2598 | **CLAM** MODEL 0501RWS-C CATALOG 1270

 **341 SMALL VANTAGE**



BLADE
Drop point, 420HC steel
BLADE LENGTH
2.50" (6.40 cm)
BLADE THICKNESS
0.120" (3.05 cm)
CLOSED LENGTH
3.75" (9.50 cm)
WEIGHT
2.30 oz (65.00 g)
HANDLE
Molded nylon with contoured DymaLux® Rosewood inlays
CLIP
Removable, reversible, stainless steel

BOX MODEL 0341RWS-B CATALOG 7834 | **CLAM** MODEL 0341RWS-C CATALOG 7835

 **503 PRINCE®**



BLADE
Drop point, 420HC steel
BLADE LENGTH
2.50" (6.40 cm)
BLADE THICKNESS
0.084" (0.213 cm)
CLOSED LENGTH
3.375" (8.60 cm)
WEIGHT
2.00 oz (57.00 g)
HANDLE
DymaLux® red wood with nickel silver bolsters
CARRY
Pocket carry

BOX MODEL 0503RWS-B CATALOG 9201 | **CLAM** MODEL 0503RWS-C CATALOG 1274

 **346 LARGE VANTAGE**



BLADE
Drop point, 420HC steel
BLADE LENGTH
3.25" (8.30 cm)
BLADE THICKNESS
0.120" (0.305 cm)
CLOSED LENGTH
4.375" (11.10 cm)
WEIGHT
3.70 oz (104.90 g)
HANDLE
Molded nylon with contoured DymaLux® Rosewood inlays
CLIP
Removable, reversible, stainless steel

BOX MODEL 0346RWS-B CATALOG 7837 | **CLAM** MODEL 0346RWS-C CATALOG 7838

371 STOCKMAN®



BOX MODEL 0371BRS-B CATALOG 5718 | CLAM MODEL 0371BRS-C CATALOG 5719



BLADE
Clip point, spey, and sheepsfoot, 420J2 steel
CLOSED LENGTH
3.875" (9.80 cm)
WEIGHT
3.10 oz (87.80 g)
HANDLE
Woodgrain with nickel silver bolsters
CARRY
Pocket carry

373 TRIO



BOX MODEL 0373BRS-B CATALOG 5720 | CLAM MODEL 0373BRS-C CATALOG 5721



BLADE
Clip point, spey, and sheepsfoot, 420J2 steel
CLOSED LENGTH
3.25" (8.30 cm)
WEIGHT
1.90 oz (54.10 g)
HANDLE
Woodgrain with nickel silver bolsters
CARRY
Pocket carry

375 DEUCE



BOX MODEL 0375BRS-B CATALOG 5722 | CLAM MODEL 0375BRS-C CATALOG 5723



BLADE
Clip point and coping, 420J2 steel
CLOSED LENGTH
2.625" (6.70 cm)
WEIGHT
0.70 oz (19.90 g)
HANDLE
Woodgrain with nickel silver bolsters
CARRY
Pocket carry

379 SOLO



BOX MODEL 0379BRS-B CATALOG 5717 | CLAM MODEL 0379BRS-C CATALOG 5716



BLADE
Clip point, 420J2 steel
BLADE LENGTH
2.25" (5.70 cm)
BLADE THICKNESS
0.050" (0.127 cm)
CLOSED LENGTH
3.00" (7.60 cm)
WEIGHT
0.90 oz (25.60 g)
HANDLE
Woodgrain with nickel silver bolsters
CARRY
Pocket carry

382 TRAPPER



BOX MODEL 0382BRS-B CATALOG 5840 | CLAM MODEL 0382BRS-C CATALOG 5841



BLADE
Clip point and spey, 420J2 steel
CLOSED LENGTH
3.50" (8.90 cm)
WEIGHT
2.60 oz (74.90 g)
HANDLE
Woodgrain with nickel silver bolsters
CARRY
Pocket carry

385 TOOTHPICK



BOX MODEL 0385BRS-B CATALOG 3137 | CLAM MODEL 0385BRS-C CATALOG 3138



BLADE
Modified clip point, 420J2 steel
BLADE LENGTH
2.25" (5.70 cm)
BLADE THICKNESS
0.070" (0.178 cm)
CLOSED LENGTH
3.00" (7.60 cm)
WEIGHT
0.80 oz (22.70 g)
HANDLE
Woodgrain with nickel silver bolsters
CARRY
Pocket carry

389 CANOE



BOX MODEL 0389BRS-B CATALOG 3139 | CLAM MODEL 0389BRS-C CATALOG 3140



BLADE
Spear and pen, 420J2 steel
CLOSED LENGTH
3.625" (9.20 cm)
WEIGHT
2.70 oz (76.50 g)
HANDLE
Woodgrain with nickel silver bolsters
CARRY
Pocket carry

NEW 811 TRACE OPS



BLADE
Tanto, 7Cr17 steel
BLADE LENGTH
3.23" (8.20 cm)
BLADE THICKNESS
0.112" (0.284 cm)
CLOSED LENGTH
4.63" (11.76 cm)
WEIGHT
3.75 oz (107.00 g)
HANDLE
Anodized aluminum
CLIP
Reversible,
stainless steel

BLACK	BOX	MODEL 0811BKS-B	CATALOG13746	CLAM	MODEL 0811BKS-C	CATALOG13747
CAMO	BOX	MODEL 0811CMS-B	CATALOG13750	CLAM	MODEL 0811CMS-C	CATALOG13751
GRAY	BOX	MODEL 0811GYS-B	CATALOG13748	CLAM	MODEL 0811GYS-C	CATALOG13749

NEW 812 TRACE



BLADE
Drop point 7Cr17 steel,
partially serrated
BLADE LENGTH
3.23" (8.20 cm)
BLADE THICKNESS
0.112" (0.284 cm)
CLOSED LENGTH
4.625" (11.76 cm)
WEIGHT
3.95 oz (113.00 g)
HANDLE
Anodized aluminum
CLIP
Reversible, stainless steel

BLUE	BOX	MODEL 0812BLX-B	CATALOG13754	CLAM	MODEL 0812BLX-C	CATALOG13755
BRONZE	BOX	MODEL 0812BRX-B	CATALOG13859	CLAM	MODEL 0812BRX-C	CATALOG13860
ORANGE	BOX	MODEL 0812ORX-B	CATALOG13756	CLAM	MODEL 0812ORX-C	CATALOG13757

NEW 813 MINI TRACE OPS



BLADE
Tanto, 7Cr17 steel
BLADE LENGTH
2.43" (6.17 cm)
BLADE THICKNESS
0.111" (0.282 cm)
CLOSED LENGTH
3.50" (8.89 cm)
WEIGHT
1.75 oz (50.00 g)
HANDLE
Anodized aluminum
CLIP
Reversible,
stainless steel

BLACK	BOX	MODEL 0813BKS-B	CATALOG13758	CLAM	MODEL 0813BKS-C	CATALOG13759
CAMO	BOX	MODEL 0813CMS-B	CATALOG13762	CLAM	MODEL 0813CMS-C	CATALOG13763
GRAY	BOX	MODEL 0813GYS-B	CATALOG13760	CLAM	MODEL 0813GYS-C	CATALOG13761

NEW 814 MINI TRACE



BLADE
Drop point,
7Cr17 steel
BLADE LENGTH
2.43" (6.17 cm)
BLADE THICKNESS
0.111" (0.282cm)
CLOSED LENGTH
3.50" (8.89 cm)
WEIGHT
1.85 oz (53.00 g)
HANDLE
Anodized aluminum
CARRY
Reversible, stainless steel

BLUE	BOX	MODEL 0814BLS-B	CATALOG13766	CLAM	MODEL 0814BLS-C	CATALOG13767
BRONZE	BOX	MODEL 0814BRS-B	CATALOG13861	CLAM	MODEL 0814BRS-C	CATALOG13862
ORANGE	BOX	MODEL 0814ORS-B	CATALOG13768	CLAM	MODEL 0814ORS-C	CATALOG13769

870 BONES



BLACK | BOX MODEL 0870BKX-B CATALOG 3595 | CLAM MODEL 0870BKX-C CATALOG 3596
 TIGERCAMO | BOX MODEL 0870CMX-B CATALOG 5846 | CLAM MODEL 0870CMX-C CATALOG 5847



BLADE
Modified tanto, partially serrated, 420HC steel

BLADE LENGTH
3.00" (7.60 cm)

BLADE THICKNESS
0.110" (0.280 cm)

CLOSED LENGTH
4.625" (11.70 cm)

WEIGHT
4.40 oz (125.30 g)

HANDLE
Tiger stripe camo or black oxide coated stainless steel and lanyard hole

CLIP
Tip-up, discreet, deep pocket carry

325 COLLEAGUE



BOX MODEL 0325SSS-B CATALOG 5830 | CLAM MODEL 0325SSS-C CATALOG 5831



BLADE
Drop point, 7Cr17 steel

BLADE LENGTH
1.975" (4.80 cm)

BLADE THICKNESS
0.082" (0.208 cm)

CLOSED LENGTH
2.75" (7.00 cm)

WEIGHT
1.30 oz (37.00 g)

HANDLE
Brushed stainless steel

CARRY
Pocket carry

327 NOBLEMAN



TITANIUM COATED | BOX MODEL 0327TTS-B CATALOG 5860 | CLAM MODEL 0327TTS-C CATALOG 5861
 STAINLESS STEEL | BOX MODEL 0327SSS-B CATALOG 5834 | CLAM MODEL 0327SSS-C CATALOG 5835
 CARBON FIBER | BOX MODEL 0327CFS-B CATALOG 3086 | CLAM MODEL 0327CFS-C CATALOG 3087



BLADE
Drop point,
327SSS: 7Cr17 steel
327TTS and 327CFS:
Titanium coated 7Cr17 steel

BLADE LENGTH
2.625" (6.70 cm)

BLADE THICKNESS
0.095" (0.241 cm)

CLOSED LENGTH
3.75" (9.50 cm)

WEIGHT
2.60 oz (74.00 g)

HANDLE
327TT: Titanium coated stainless steel with EDM texture
327SSS: Brushed stainless steel
327CFS: Stainless steel with rubberized, carbon fiber graphic

CLIP
deep pocket carry, removable, stainless steel

NEW 743 MINI SOVEREIGN



CARBON FIBER | BOX MODEL 0743CFS-B CATALOG 13808 | CLAM MODEL 0743CFS-C CATALOG 13809
 STAINLESS STEEL | BOX MODEL 0743SSS-B CATALOG 13810 | CLAM MODEL 0743SSS-C CATALOG 13811



BLADE
Modified clip point
743CFS: Titanium coated 7Cr17 steel
743SSS: 7Cr17 steel

BLADE LENGTH
2.625" (6.67 cm)

BLADE THICKNESS
0.110" (0.279 cm)

CLOSED LENGTH
3.625" (9.20 cm)

WEIGHT
3.15 oz (90.00 g)

HANDLE
743CFS: Stainless steel with rubberized, carbon fiber graphic
743SSS: Stainless steel

CLIP
Stainless steel

LOCK
Button lock

NEW 744 SOVEREIGN



CARBON FIBER | BOX MODEL 0744CFS-B CATALOG 13812 | CLAM MODEL 0744CFS-C CATALOG 13813
 STAINLESS STEEL | BOX MODEL 0744SSS-B CATALOG 13814 | CLAM MODEL 0744SSS-C CATALOG 13815



BLADE
Modified clip point
744CFS: Titanium coated 7Cr17 steel
744SSS: 7Cr17 steel

BLADE LENGTH
3.225" (8.20 cm)

BLADE THICKNESS
0.110" (0.279 cm)

CLOSED LENGTH
4.25" (10.80 cm)

WEIGHT
4.15 oz (119.00 g)

HANDLE
744CFS: Stainless steel with rubberized, carbon fiber graphic
744SSS: Stainless steel

CLIP
Stainless steel

LOCK
Button lock



239 INFUSION - MODIFIED TANTO BLADE



BLADE
Modified tanto, 7Cr17 steel
BLADE LENGTH
3.25" (7.60 cm)
BLADE THICKNESS
0.126" (0.320 cm)
CLOSED LENGTH
4.625" (11.76 cm)
WEIGHT
3.67 oz (104.00 g)
HANDLE
G10
CLIP
Deep pocket carry,
removable, reversible,
stainless steel



BLACK	BOX MODEL 0239BKS-B CATALOG13543	CLAM MODEL 0239BKS-C CATALOG13544
O.D. GREEN	BOX MODEL 0239GRS-B CATALOG13541	CLAM MODEL 0239GRS-C CATALOG13542
TEAL	BOX MODEL 0239GRS1-B CATALOG13545	CLAM MODEL 0239GRS1-C CATALOG13546

239 INFUSION - DROP POINT BLADE



BLADE
Drop point, 7Cr17 steel
BLADE LENGTH
3.25" (7.60 cm)
BLADE THICKNESS
0.126" (0.320 cm)
CLOSED LENGTH
4.625" (11.76 cm)
WEIGHT
3.85 oz (109.00 g)
HANDLE
Anodized aluminum
CLIP
Deep pocket carry,
removable, reversible,
stainless steel



BLACK	BOX MODEL 0239BKS1-B CATALOG13549	CLAM MODEL 0239BKS1-C CATALOG13550
BLUE	BOX MODEL 0239BLS-B CATALOG13547	CLAM MODEL 0239BLS-C CATALOG13548
ORANGE	BOX MODEL 0239ORS-B CATALOG13551	CLAM MODEL 0239ORS-C CATALOG13552

251 LANGFORD



BLADE
Drop point, 7Cr17 steel
BLADE LENGTH
3.375" (8.60 cm)
BLADE THICKNESS
0.110" (0.280 cm)
CLOSED LENGTH
4.50" (11.40 cm)
WEIGHT
3.70 oz (104.90 g)
HANDLE
G10
CLIP
Deep pocket carry,
stainless steel

BLACK	BOX MODEL 0251BKS-B CATALOG13042	CLAM MODEL 0251BKS-C CATALOG13043
GREEN	BOX MODEL 0251GRS-B CATALOG13044	CLAM MODEL 0251GRS-C CATALOG13045

252 TRUNK



BLADE
Cleaver, 7Cr17 steel
BLADE LENGTH
2.875" (7.30 cm)
BLADE THICKNESS
0.110" (0.280 cm)
CLOSED LENGTH
4.00" (10.20 cm)
WEIGHT
3.10 oz (87.90 g)
HANDLE
G10
CLIP
Deep pocket carry,
stainless steel

BLACK	BOX MODEL 0252BKS-B CATALOG13090	CLAM MODEL 0252BKS-C CATALOG13091
TAN	BOX MODEL 0252TNS-B CATALOG13046	CLAM MODEL 0252TNS-C CATALOG13047

254 ODESSA



BLADE
Drop point, 7Cr17 steel
BLADE LENGTH
3.125" (7.90 cm)
BLADE THICKNESS
0.110" (0.280 cm)
CLOSED LENGTH
4.375" (11.10 cm)
WEIGHT
4.90 oz (138.91 g)
HANDLE
Stainless steel
CLIP
Deep pocket carry,
stainless steel

BOX MODEL 0254SSS-B CATALOG13052	CLAM MODEL 0254SSS-C CATALOG13053
----------------------------------	-----------------------------------

263 HILINE



BLADE
Cleaver, D2 steel

BLADE LENGTH
3.25" (8.30 cm)

BLADE THICKNESS
0.140" (0.356 cm)

CLOSED LENGTH
4.375" (11.00 cm)

WEIGHT
3.90 oz (110.00 g)

HANDLE
Front: Gray anodized aluminum with G10 inlay
Back: Stonewashed stainless steel

CLIP
Stonewashed stainless steel

BOX MODEL 0263GYS-B CATALOG13243 | CLAM MODEL 0263GYS-C CATALOG13244

259 HAXBY



BLADE
Drop point, 8Cr13 steel

BLADE LENGTH
3.875" (9.80 cm)

BLADE THICKNESS
0.130" (0.330 cm)

CLOSED LENGTH
5.00" (12.70 cm)

WEIGHT
4.50 oz (127.60 g)

HANDLE
Black carbon fiber

CLIP
Stainless steel

BOX MODEL 0259CFS-B CATALOG13066 | CLAM MODEL 0259CFS-C CATALOG13067

263 HILINE XL



BLADE
Cleaver, D2 steel

BLADE LENGTH
3.75" (9.53 cm)

BLADE THICKNESS
0.148" (0.376 cm)

CLOSED LENGTH
5.125" (13.02 cm)

WEIGHT
4.41 oz (125.00 g)

HANDLE
Anodized aluminum micarta

CLIP
Stainless steel

BLACK BOX MODEL 0263BKS1-B CATALOG13553 | CLAM MODEL 0263BKS1-C CATALOG13554
 GRAY BOX MODEL 0263GYS1-B CATALOG13555 | CLAM MODEL 0263GYS1-C CATALOG13556
 COPPER BOX MODEL 0263CPS1-B CATALOG13557 | CLAM MODEL 0263CPS1-C CATALOG13558

262 HEXAM ASSIST



BLADE
Drop point, 7Cr17 steel

BLADE LENGTH
3.34" (8.50 cm)

BLADE THICKNESS
0.126" (0.320 cm)

CLOSED LENGTH
5.125" (13.00 cm)

WEIGHT
5.30 oz (150.00 g)

HANDLE
Anodized aluminum

CLIP
Black oxide coated, stainless steel



GRAY BOX MODEL 0262GYS-B CATALOG13241 | CLAM MODEL 0262GYS-C CATALOG13242
 GREEN BOX MODEL 02620DS-B CATALOG13239 | CLAM MODEL 02620DS-C CATALOG13240

264 CAVALIER



BLADE
Drop point, 7Cr17 steel

BLADE LENGTH
3.60" (9.10 cm)

BLADE THICKNESS
0.110" (0.280 cm)

CLOSED LENGTH
4.50" (11.40 cm)

WEIGHT
2.80 oz (80.00 g)

HANDLE
FRONT: Gray anodized aluminum handle with carbon fiber inlay
BACK: Stonewashed stainless steel

CLIP
Stonewashed stainless steel

BOX MODEL 0264GYS-B CATALOG13245 | CLAM MODEL 0264GYS-C CATALOG13246



A fisherman wearing a cap, vest, and waders stands on a large rock in a river, holding a fishing rod. The background is a dense forest of tall trees, some with yellowing leaves, suggesting an autumn setting. The water in the foreground is slightly blurred.

FISHING & OUTDOORS



 **104 COMPADRE CAMP KNIFE**



BOX MODEL0104BRS1-B CATALOG12245



BLADE
Drop point, Cobalt Cerakoted 5160 spring steel
BLADE LENGTH
4.50" (11.40 cm)
BLADE THICKNESS
0.150" (0.381 cm)
OVERALL
9.50" (24.10 cm)
WEIGHT
7.10 oz (201.30 g)
HANDLE
Natural canvas micarta
SHEATH
Black, genuine leather, with belt loop attachment, made in the USA

YOUR BEST FRIEND IN THE OUTDOORS

THE COMPADRE SERIES

Rugged environments require rugged tools. The Compadre Series was built with that in mind. With Cerakoted full tang 5160 steel, these tools can take a beating and continue performing for years to come.

NATURAL CANVAS MICARTA HANDLE



MADE IN USA
LEATHER SHEATH

CERAKOTED BLADE WITH FULL TANG DESIGN

 **108 COMPADRE FROE®**



BOX MODEL0108BRS1-B CATALOG12247



BLADE
Froe, Cobalt Cerakoted 5160 spring steel
BLADE LENGTH
9.50" (24.10 cm)
BLADE THICKNESS
0.230" (0.584 cm)
OVERALL
16.75" (42.50 cm)
WEIGHT
23.20 oz (657.70 g)
HANDLE
Natural canvas micarta
SHEATH
Black, genuine leather, with D ring attachment, made in the USA



835 SMALL FOLDING SELKIRK



BOX MODEL 0835BRS-B CATALOG 10682 | CLAM MODEL 0835BRS-C CATALOG 10683



BLADE
Drop point, 420HC steel
BLADE LENGTH
3.25" (8.20 cm)
BLADE THICKNESS
0.120" (0.305 cm)
CLOSED LENGTH
4.25" (10.80 cm)
WEIGHT
4.50 oz (127.50 g)
HANDLE
Brown and black contoured micarta with a steel bolster
CLIP
Removable, reversible, discreet deep pocket carry

836 FOLDING SELKIRK



BOX MODEL 0836BRS-B CATALOG 10678 | CLAM MODEL 0836BRS-C CATALOG 10679



BLADE
Drop point, 420HC steel
BLADE LENGTH
3.90" (9.90 cm)
BLADE THICKNESS
0.150" (0.381 cm)
CLOSED LENGTH
5.00" (12.70 cm)
WEIGHT
7.50 oz (212.60 g)
HANDLE
Brown and black contoured micarta with a steel bolster
SHEATH
Injected molded nylon sheath
FEATURE
2.25" ferrocerium striker with whistle integrated in grip, imported

853 SMALL SELKIRK



BOX MODEL 0853BRS-B CATALOG 11109 | CLAM MODEL 0853BRS-C CATALOG 11110



BLADE
Drop point, 420HC steel
BLADE LENGTH
4.00" (10.20 cm)
BLADE THICKNESS
0.125" (0.318 cm)
OVERALL
8.25" (21.00 cm)
WEIGHT
6.40 oz (181.40 g)
HANDLE
Brown and black contoured micarta with steel pommel and guard
SHEATH
Injection molded nylon, removable & reversible belt loop, imported

863 SELKIRK



BOX MODEL 0863BRS-B CATALOG 10180 | CLAM MODEL 0863BRS-C CATALOG 10181



BLADE
Drop point, 420HC steel
BLADE LENGTH
4.625" (11.70 cm)
BLADE THICKNESS
0.135" (0.343 cm)
OVERALL
9.50" (24.10 cm)
WEIGHT
7.60 oz (212.60 g)
HANDLE
Brown and black contoured micarta with steel pommel and guard
SHEATH
Injection molded nylon, imported. Can be configured into horizontal or vertical belt carry.
FEATURES
2.25" ferrocerium striker with whistle integrated in the grip. Rear bolster can be used as an improvised hammer.

220 SILVER CREEK 6.5" FOLDING FILLET



BOX MODEL 0220BLS-B CATALOG 3201 | CLAM MODEL 0220BLS-C CATALOG 3202



BLADE
Flexible fillet, titanium coated 420J2 steel
BLADE LENGTH
6.50" (16.50 cm)
BLADE THICKNESS
0.075" (0.191 cm)
CLOSED LENGTH
7.25" (18.40 cm)
WEIGHT
6.00 oz (170.10 g)
HANDLE
Glass reinforced polypropylene with TPE rubber and a stainless steel guard

223 SILVER CREEK 6" FILLET



BOX MODEL 0223BLS-B CATALOG 3116 | CLAM MODEL 0223BLS-C CATALOG 3117



BLADE
Flexible fillet, titanium coated 420J2 steel
BLADE LENGTH
6.375" (16.20 cm)
BLADE THICKNESS
0.075" (0.191 cm)
OVERALL
11.125" (28.30 cm)
WEIGHT
5.00 oz (142.00 g)
HANDLE
Glass reinforced polypropylene with TPE rubber and a stainless steel guard
SHEATH
Injection molded plastic with integrated belt clip and stylized drain hole, imported

225 SILVER CREEK 9" FILLET



BOX MODEL 0225BLS-B CATALOG 3118 | CLAM MODEL 0225BLS-C CATALOG 3119



BLADE
Flexible fillet, titanium coated 420J2 steel
BLADE LENGTH
9.625" (24.40 cm)
BLADE THICKNESS
0.075" (0.191 cm)
OVERALL
14.375" (36.50 cm)
WEIGHT
5.30 oz (150.20 g)
HANDLE
Glass reinforced polypropylene with TPE rubber and a stainless steel guard
SHEATH
Injection molded plastic with integrated belt clip and stylized drain hole, imported



FROM HOOK TO TABLE
THE HOOKSETS

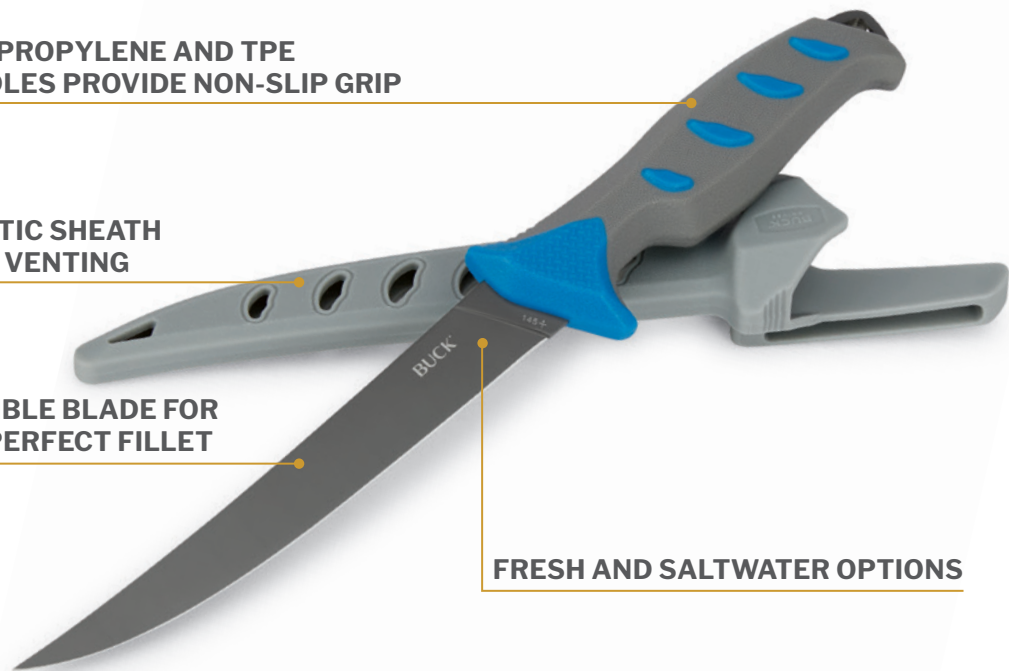
These knives were made to help you take your catch from the hook to the table as efficiently as possible. With options for salt and freshwater, these knives are prepared for any fishing trip.

POLYPROPYLENE AND TPE HANDLES PROVIDE NON-SLIP GRIP

PLASTIC SHEATH WITH VENTING

FLEXIBLE BLADE FOR THE PERFECT FILLET

FRESH AND SALTWATER OPTIONS



144 HOOKSET 6" FRESHWATER FILLET



BOX MODEL 01440RS-B CATALOG 13269 | CLAM MODEL 01440RS-C CATALOG 13270

145 HOOKSET 6" SALTWATER FILLET



BOX MODEL 0145BLS-B CATALOG 13271 | CLAM MODEL 0145BLS-C CATALOG 13272

146 HOOKSET 9" FRESHWATER FILLET



BOX MODEL 01460RS-B CATALOG 13273 | CLAM MODEL 01460RS-C CATALOG 13274

147 HOOKSET 9" SALTWATER FILLET



BOX MODEL 0147BLS-B CATALOG 13275 | CLAM MODEL 0147BLS-C CATALOG 13276

148 HOOKSET 6" FRESHWATER FOLDING FILLET



BOX MODEL 01480RS-B CATALOG 13277 | CLAM MODEL 01480RS-C CATALOG 13278

149 HOOKSET 10" SALTWATER BREAKER



BOX MODEL 0149BLS-B CATALOG 13279 | CLAM MODEL 0149BLS-C CATALOG 13280

150 HOOKSET 6" SALTWATER CLEAVER



BOX MODEL 0150BLS-B CATALOG 13281 | CLAM MODEL 0150BLS-C CATALOG 13282



BLADE
 144: Flexible fillet, 5Cr15 steel
 145: Flexible fillet, titanium coated 5Cr15 steel
 146: Flexible fillet, 5Cr15 steel
 147: Flexible fillet, titanium coated 5Cr15 steel
 148: Flexible fillet, 5Cr15 steel
 149: Cleaver, titanium coated 5Cr15 steel
 150: Cleaver, titanium coated 5Cr15 steel

BLADE LENGTH
 144: 6.00" (15.50 cm)
 145: 6.00" (15.50 cm)
 146: 9.00" (23.00 cm)
 147: 9.00" (23.00 cm)
 148: 6.34" (16.10 cm)
 149: 10.00" (15.50 cm)
 150: 6.35" (16.12 cm)

BLADE THICKNESS
 144: 0.080" (0.20 cm)
 145: 0.080" (0.20 cm)
 146: 0.080" (0.20 cm)
 147: 0.080" (0.20 cm)
 148: 0.070" (0.18 cm)
 149: 0.118" (0.30 cm)
 150: 0.118" (0.30 cm)

OVERALL LENGTH
 144: 11.54" (29.30 cm)
 145: 11.54" (29.30 cm)
 146: 14.45" (36.70 cm)
 147: 14.45" (36.70 cm)
 148: 8.03" (20.40 cm) closed
 149: 15.83" (40.20 cm)
 150: 12.17" (30.90 cm)

WEIGHT
 144: 3.93 oz (111.50 g)
 145: 3.93 oz (111.50 g)
 146: 4.40 oz (125.00 g)
 147: 4.40 oz (125.00 g)
 148: 5.29 oz (150.00 g)
 149: 8.34 oz (236.50 g)
 150: 9.60 oz (272.00 g)

HANDLE
 Polypropylene and TPE

SHEATH
 Injected molded plastic with integrated belt loop, imported

*148 does not include sheath



2024 LEGACY



THE HEIGHT OF OUR CRAFTSMANSHIP

THE 2024 LEGACY COLLECTION

From classics, to autos, to the return of the BuckMaster, there is something to please any knife collector.

 **NEW** 084 BUCKMASTER 2.0 COMBAT DIVER PRO



BLADE
Spear point, Armor Black Cerakoted 420HC steel
BLADE LENGTH
6.75" (17.10 cm)
BLADE THICKNESS
0.230" (0.584 cm)
OVERALL
13.00" (33.02 cm)
WEIGHT
17.50 oz (496.00 g)
HANDLE
Machine textured G10
SCABBARD
Black Kydex, omnidirectional, friction fit, with nylon backer, and Emergency Anchor Wing (EAW) storage attachment with ability to deploy EAW while in scabbard. Made in the USA.
FEATURE
Ambidextrous, reversible, removable, Armor Black Cerakoted stainless steel EAW



EMERGENCY ANCHOR WING



WITH EAW ATTACHED

BOX MODEL 0084BKXLE-B CATALOG 13789

 **NEW** 500 DUKE



BLADE
Modified clip point, S30V steel
BLADE LENGTH
3.00" (7.60 cm)
BLADE THICKNESS
0.110" (0.279 cm)
CLOSED LENGTH
4.25" (10.80 cm)
WEIGHT
4.45 oz (126.00 g)
HANDLE
Barehead nickel silver bolster with marble carbon fiber inlays
CLIP
Stainless steel



BOX MODEL 0500CFSLE-B CATALOG 13650

 **NEW** 402 AKONUA



BLADE
Skinner, S35VN steel
BLADE LENGTH
4.75" (21.07 cm)
BLADE THICKNESS
0.180" (0.457 cm)
OVERALL
10.125" (25.72 cm)
WEIGHT
8.75 oz (248.10 g)
HANDLE
Black burlap micarta with a red spacer
SHEATH
Black, distressed leather with rivets, made in the USA



BOX MODEL 0402BKSLE-B CATALOG 13745

 **NEW** 112 RANGER PRO



BLADE
Drop point, S45VN steel
BLADE LENGTH
3.00" (7.62 cm)
BLADE THICKNESS
0.120" (0.305 cm)
CLOSED LENGTH
4.25" (10.80 cm)
WEIGHT
5.15 oz (146.00 g)
HANDLE
Nickel silver barehead bolster with scalloped black and brown Richlite
SHEATH
Black genuine leather, made in the USA



BOX MODEL 0112BKSLE2-B CATALOG 13741

 **NEW** 112 RANGER SLIM



BLADE
Modified clip point, S45VN steel
BLADE LENGTH
3.00" (7.62 cm)
BLADE THICKNESS
0.120" (0.305 cm)
CLOSED LENGTH
4.25" (10.80 cm)
WEIGHT
3.90 oz (111.00 g)
HANDLE
Bead blasted titanium with bronze PVD fasteners
CLIP
Black, DLC coated, tip-up, reversible



BOX MODEL 0112GYSLE-B CATALOG 13703

 **NEW** 838 DEPLOY



BLADE
Drop point, Cerakoted, S45VN steel
BLADE LENGTH
3.25" (8.30 cm)
BLADE THICKNESS
0.120" (0.305 cm)
CLOSED LENGTH
5.00" (12.70 cm)
WEIGHT
4.15 oz (120.00 g)
HANDLE
Marbled carbon fiber with copper button lock, safety and spacer
CLIP
Cerakoted, deep pocket carry, removable, stainless steel



BOX MODEL 0838CFSLE-B CATALOG 13648



The sale of automatic knives is federally regulated. See page 90 for details.

1984-2024: CELEBRATING 40 YEARS OF THE BUCKMASTER

THE 084 BUCKMASTER 2.0 COMBAT DIVER PRO

The legendary BuckMaster Model 184 took the knife world by storm in the 1980s. Built as a mission-critical tool for military use, the original BuckMaster found a following among those in and out of uniform. Buck Knives delivered 2,500 BuckMasters to the world-renowned U.S. Navy SEALs in 1985. Consequently, the original BuckMaster Model 184, having undergone rigorous field testing by U.S. Navy SEALs, U.S. Army Special Forces, and various other special operations personnel, emerged as a pivotal design that led to the development of the venerable M9 Multi-Purpose Bayonet System, a tool that earned official adoption by the U.S. Army in 1987.

For 2024, Buck Knives proudly presents the long-awaited 084 BuckMaster 2.0 COMBAT DIVER PRO. It is built to exacting standards with the direct input of current and former service members, including retired U.S. Navy SEAL Commander D.T. Coulter. Commander Coulter's 55-year journey for the perfect dive knife led to the creation of the Buckmaster 2.0. This next-generation BuckMaster is built to meet the exacting challenges of today's military. Buck Knives will allocate 1,000 084 BuckMaster 2.0 COMBAT DIVER PROs to its 2024 Legacy Collection, allowing civilians the opportunity to own and collect a special knife with combat DNA.

The original Buckmaster Model 184 had two detachable anchors that could secure maritime equipment in coral or sand for a load capacity of 250 lbs. Likewise, the BuckMaster 2.0 has an anchor system called the Emergency Anchor Wing (EAW). Unlike the two-piece detachable pin system of the original Buckmaster, the EAW has a distinctive one-piece wing shape that is reversible, ambidextrous, and designed with a load capacity of 400 lbs. The Buckmaster 2.0 blade has a strong spear point blade suited for diver-specific duties such as prying and digging. Infused with Commander Coulter's field-based design intent and a specially formulated Paul Bos heat treatment developed by Paul himself, this knife stands ready no matter the application.

This year, the history of the BuckMaster perseveres with the introduction of the ultimate diving knife, the new 084 BuckMaster 2.0 COMBAT DIVER PRO.



"IN MY OPINION, BUCK KNIVES MAKES SOME OF THE BEST KNIVES IN THE WORLD."

-COMMANDER D.T. COULTER

U.S. NAVY SEAL, RETIRED

SHARPENERS

EDGETEK ULTRA FLIPSTIK



FLIPSTIK HANDLE DOUBLES AS A CASE!
Twist to lock or unlock!

BOX MODEL 97044-B CATALOG 4976 | **CLAM** MODEL 97044-C CATALOG 4977

MATERIAL
100% Diamond coated oval surfaces

SIZE
4.00" x 0.50"
(10.20 cm x 1.30 cm)

OVERALL LENGTH
9.00" (22.90 cm)

CLOSED LENGTH
5.00" (12.70 cm)

WEIGHT
3.00 oz (85.00 g)

GRIT
325 (Coarse)
750 (Medium)
1200 (Fine)

EDGETEK FIELD FLIPSTIK



FLIPSTIK HANDLE DOUBLES AS A CASE!
Twist to lock or unlock!

BOX MODEL 97043-B CATALOG 4974 | **CLAM** MODEL 97043-C CATALOG 4975

MATERIAL
100% Diamond coated oval surfaces

SIZE
4.00" x 0.75"
(10.20 cm x 1.90 cm)

OVERALL LENGTH
9.00" (22.90 cm)

CLOSED LENGTH
5.00" (12.70 cm)

WEIGHT
1.90 oz (53.90 g)

GRIT
750 (Medium) both sides

EDGETEK FISHING FLIPSTIK



FLIPSTIK HANDLE DOUBLES AS A CASE!
Twist to lock or unlock!

BOX MODEL 97032-B CATALOG 7590 | **CLAM** MODEL 97032-C CATALOG 7591

MATERIAL
100% Diamond coated oval surfaces

SIZE
4.00" x 0.50"
(10.20 cm x 1.30 cm)

OVERALL LENGTH
9.00" (22.90 cm)

CLOSED LENGTH
5.00" (12.70 cm)

WEIGHT
1.60 oz (45.40 g)

GRIT
325 (Coarse hook grooves)
750 (Medium, flat)

EDGETEK ULTRA STEEL 10"



BOX MODEL 97082-B CATALOG 6253 | **CLAM** MODEL 97082-C CATALOG 6254

MATERIAL
100% Diamond coated oval surfaces

SIZE
10.00" x 0.50"
(25.40 cm x 1.30 cm)

OVERALL LENGTH
15.75" (40.00 cm)

WEIGHT
6.90 oz (195.60 g)

GRIT
325 (Coarse)
750 (Medium)
1200 (Fine)

EDGETEK STEEL 10"



BOX MODEL 97081-B CATALOG 6251 | **CLAM** MODEL 97081-C CATALOG 6252

MATERIAL
100% Diamond coated oval surfaces

SIZE
10.00" x 0.50"
(25.40 cm x 1.30 cm)

OVERALL LENGTH
15.25" (38.70 cm)

WEIGHT
3.30 oz (93.60 g)

GRIT
750 (Medium) both sides

EDGETEK DUAL FLAT POCKET STONE



BOX MODEL 97076-B CATALOG 6241 | **CLAM** MODEL 97076-C CATALOG 6242



MATERIAL
100% Diamond coated surfaces

LENGTH
4.00" x 1.25"
(10.20 cm x 3.20 cm)

WEIGHT
1.30 oz (36.90 g)

GRIT
325 (Coarse)
750 (Medium)

SHEATH
Black vinyl

EDGETEK BENCH STONE (MEDIUM AND COARSE)



RED | **BOX** MODEL 97078-B CATALOG 6245 | **CLAM** MODEL 97078-C CATALOG 6246
YELLOW | **BOX** MODEL 97077-B CATALOG 6243 | **CLAM** MODEL 97077-C CATALOG 6244

MATERIAL
100% Diamond coated surfaces

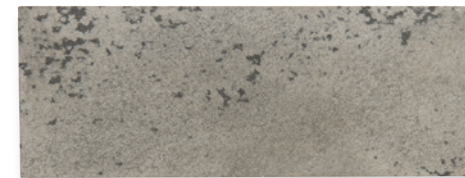
STONE LENGTH
6.00" x 2.00"
(15.20 cm x 5.10 cm)

OVERALL LENGTH
7.625" x 2.625"
(19.30 cm x 11.70 cm)

WEIGHT
4.60 oz (130.40 g)

GRIT
Red: 750 (Medium) single side
Yellow: 325 (Coarse) single side

SOFT ARKANSAS STONE



BOX MODEL 97017-B CATALOG 10094



MATERIAL
100% Natural Quartz crystals-Novaculite

LENGTH
1.625" x 4.375"
(4.20 cm x 11.10 cm)

GRIT
500-600 (Course)

SHEATH
Black nylon

DIAMOND POCKET SHARPENER



BOX MODEL 97070-B CATALOG 5867



MATERIAL
Diamond sharpener in a retractable, pen style barrel. Tapered end for serrated blades. Fish hook groove. Flat side for straight blades. Pocket clip. Portable, versatile and durable for field use.

CLOSED LENGTH
5.125"
(13.10 cm)

GRIT
400 (Medium)

BUCK KNIVES DISPLAYS

Contact your sales rep for ordering information.

ACRYLIC DISPLAY STANDS



5-KNIFE STAND

Clear acrylic with black Buck logo
*Knives not included

WIDTH 4.125" (11.80 cm)	MODEL 21005
HEIGHT 3.75" (9.50 cm)	CATALOG 5519
DEPTH 5.50" (14.00 cm)	



3-KNIFE STAND

Clear acrylic with black Buck logo
*Knives not included

WIDTH 4.125" (11.80 cm)	MODEL 21004
HEIGHT 3.75" (9.50 cm)	CATALOG 2188
DEPTH 5.50" (14.00 cm)	



1-KNIFE STAND

Clear acrylic with black Buck logo
*Knives not included

WIDTH 1.50" (3.80 cm)	MODEL 21008
HEIGHT 2.00" (5.10 cm)	CATALOG 2192
DEPTH 2.00" (5.10 cm)	



SINGLE SLOT 1-KNIFE STAND

Clear acrylic with black Buck logo
*Knives not included

WIDTH 1.50" (3.80 cm)	MODEL 21006
HEIGHT 1.125" (4.40 cm)	CATALOG 2190
DEPTH 1.125" (4.40 cm)	

NEW MULTI-TIER DISPLAY STANDS



3-TIER KNIFE GLORIFIER

WIDTH 9.13" (23.19 cm)	MODEL 21088
HEIGHT 7.50" (19.05 cm)	CATALOG 13895
DEPTH 8.38" (21.29 cm)	*Knives not included



5-TIER KNIFE GLORIFIER

WIDTH 9.13" (23.19 cm)	MODEL 21089
HEIGHT 14.00" (35.56 cm)	CATALOG 13896
DEPTH 11.88" (30.18 cm)	*Knives not included



1-TIER KNIFE GLORIFIER

WIDTH 9.13" (23.19 cm)	MODEL 21087
HEIGHT 5.00" (12.70 cm)	CATALOG 13894
DEPTH 3.00" (7.62 cm)	*Knives not included

NEW COUNTER DISPLAY



DIAMETER
16.00" (40.64 cm)
HEIGHT
22.50" (57.15 cm)

MODEL 21090 CATALOG 13897

*Knives not included

BUCK LOGO SIGNS



MODEL 95284 CATALOG 13521

ILLUMINATED SIGN

WIDTH
23.00" (58.42 cm)
HEIGHT
17.00" (43.18 cm)
DEPTH
0.50" (1.27 cm)
FEATURES
• LED illumination
• Aluminum and acrylic construction
• Multiple hanging options
• Low-draw LED with high output
• Made in the USA



MODEL 95283 CATALOG 13520

TIN TACKER SIGN

WIDTH
17.50" (44.45 cm)
HEIGHT
11.00" (47.94 cm)
DEPTH
0.024" (0.061 cm)
FEATURES
• Aluminum construction
• Easy to hang
• Highly legible
• Made in the USA

NEW FLOOR DISPLAYS



WITH GLASS SHELVES

MODEL 21091 CATALOG 13898

*Knives not included



WITH MAGNETIC SHELVES

MODEL 21092 CATALOG 13899

*Knives not included

WIDTH
24.00" (60.96 cm)
HEIGHT
72.00" (182.88 cm)
DEPTH
18.00" (45.72 cm)

QUALITY BRANDED HATS AND SHIRTS

BUCK GEAR

Drawing inspiration from over a century of knife making, this 2024 apparel run is a mix of new and vintage designs. Soft, comfortable, and stylish, this collection of tees and hats make the perfect addition to any wardrobe.



NEW



O.D. GREEN BUCK LOGO T-SHIRT

100% Cotton, Army, Midweight, Regular Fit

- MODEL 13447-SML CATALOG 13865
- MODEL 13447-MED CATALOG 13866
- MODEL 13447-LRG CATALOG 13867
- MODEL 13447-XLG CATALOG 13868
- MODEL 13447-2XL CATALOG 13869
- MODEL 13447-3XL CATALOG 13870

NEW



BLACK BUCK LOGO T-SHIRT

100% Cotton, Black, Midweight, Regular Fit

- MODEL 13448-SML CATALOG 13871
- MODEL 13448-MED CATALOG 13872
- MODEL 13448-LRG CATALOG 13873
- MODEL 13448-XLG CATALOG 13874
- MODEL 13448-2XL CATALOG 13875
- MODEL 13448-3XL CATALOG 13876

NEW



PETROL BLUE BUCK LOGO T-SHIRT

100% Cotton, Petrol Blue, Midweight, Regular Fit

- MODEL 13449-SML CATALOG 13877
- MODEL 13449-MED CATALOG 13878
- MODEL 13449-LRG CATALOG 13879
- MODEL 13449-XLG CATALOG 13880
- MODEL 13449-2XL CATALOG 13881
- MODEL 13449-3XL CATALOG 13882

NEW



BUCK KNIVES MFG CO HAT

MODEL 89175 CATALOG 13889

NEW



BROWN LOGO HAT

MODEL 89176 CATALOG 13890



O.D. GREEN VINTAGE LOGO HAT

MODEL 89147 CATALOG 12806

NEW



BUCK BLADES T-SHIRT

100% Cotton, Charcoal, Midweight, Regular Fit

- MODEL 13431-SML CATALOG 13364
- MODEL 13431-MED CATALOG 13365
- MODEL 13431-LRG CATALOG 13366
- MODEL 13431-XLG CATALOG 13367
- MODEL 13431-2XL CATALOG 13368
- MODEL 13431-3XL CATALOG 13369



BUCK ANVIL T-SHIRT

100% Cotton, Camel, Midweight, Regular Fit

- MODEL 13450-SML CATALOG 13883
- MODEL 13450-MED CATALOG 13884
- MODEL 13450-LRG CATALOG 13885
- MODEL 13450-XLG CATALOG 13886
- MODEL 13450-2XL CATALOG 13887
- MODEL 13450-3XL CATALOG 13888



QUALITY BLADES TEE

100% Cotton, Copper, Lightweight, Regular Fit

- MODEL 13433-SML CATALOG 13376
- MODEL 13433-MED CATALOG 13377
- MODEL 13433-LRG CATALOG 13378
- MODEL 13433-XLG CATALOG 13379
- MODEL 13433-2XL CATALOG 13380
- MODEL 13433-3XL CATALOG 13381



BUCK MULTICAM HAT

MODEL 89146 CATALOG 12805



LEATHER PATCH O.D. GREEN HAT

MODEL 89160 CATALOG 13418



EMBROIDERED BLACK LOGO HAT

MODEL 89162 CATALOG 13420

NEW



MARSH DUCK CAMO HAT

MODEL 89177 CATALOG 13891

NEW



BARK DUCK CAMO HAT

MODEL 89178 CATALOG 13892

NEW



BLAZE DUCK CAMO HAT

MODEL 89179 CATALOG 13893

KNIFE KNOW-HOW

COMMON BLADE STEELS



RC 62-64

Magnacut is one of the best all-around steels available today, and the highest-performance steel Buck offers. This CPM (Crucible Particle Metallurgy) stainless steel offers outstanding toughness, amazing corrosion resistance, and exemplary edge retention. A clever refinement of the chromium content of the steel means that Magnacut does not make any trade-offs. Magnacut does not trade toughness for edge retention, which is a common problem in high-hardness steels. Magnacut does not trade edge retention for sharpenability, which is a challenge in most stainless steels. Magnacut was designed specifically for usage in knives, and makes for a great choice for an EDC folder, a hard-working camp knife, and everything in between.



RC 59-61

CPM S45VN is a martensitic stainless steel designed to offer improved corrosion and wear resistance over other leading steels. The CPM process produces a uniform, high-quality steel defined by supreme stability, and toughness compared to those produced by other melting practices. The chemical components in S45VN utilize niobium and nitrogen in place of some of the vanadium and carbon to provide an excellent combination of edge, wear, and corrosion resistance, and toughness. This steel is a solid choice for heavy use, such as an everyday carry or work knife.



RC 59-61

CPM S35VN is a martensitic stainless steel created to provide improved toughness over CPM S30V. The chemical makeup is balanced to form some niobium carbides along with vanadium and chromium carbides, making CPM S35VN about 15-20% tougher than CPM S30V without any loss of wear resistance. This increased toughness helps prevent edge chipping, as both vanadium and niobium carbides are harder and more effective in providing wear resistance. A premier hunting steel, it would be appropriate for the big game hunter or guide who intends to field dress multiple animals.



RC 59-61

Small grain structure with a high carbon content has allowed this powdered steel to become the industry standard by which other super steels are measured. With our BOS heat treat process, the Rc 59-61 steel outperforms other steels in edge retention, ductility, and wear resistance. This steel takes a beating and holds an edge for a long time. The properties that allow it to hold an edge also slow the sharpening process. S30V is perfect for somebody seeking a high-performance blade, but does not want to have to sharpen in the field.



RC 58-62

154CM is a modification of 440C where molybdenum has been added. With greater corrosion/wear resistance, better edge retention, and a higher Rockwell hardness than 440C. 154CM's combination of traits that make this an excellent choice in pocket knives where edge retention and ease of sharpening in the field matter.



RC 58-60

This martensitic stainless steel with its hardness at a Rc of 58-60 results in a good balance between edge retention, amazing corrosion resistance, and ease of resharpening. This steel is a good choice for every kind of knife from hunting and everyday carry, to kitchen cutlery. This high-value steel will live through years of service and edge maintenance.



RC 57-58

This high carbon spring steel is a great choice for applications that require impact loads and extreme bending. At a Rc 57-58, the steel is not brittle. It will bend and flex back to its original shape while still remaining hard enough for good edge retention.

COMMON BLADE SHAPES



CLIP POINT

This blade is concavely clipped with a thinner and sharper tip, making it good for detailed work and piercing.



DROP POINT

A full belied blade with a strong, thick point for heavier tasks. A great all-around blade.



SKINNER

With a curved belly, this shape excels at cutting through thick layers. This shape also reduces the risk of accidental punctures.



TANTO

Designed with a heavier, stronger, angled grind for very heavy-duty use while piercing, scraping, and prying.



GUTHOOK

This design hits the skin of an animal square and keeps the hide from bunching up in the process, reducing the risk of puncturing internal organs.



SERRATED

Serrations on a blade add a semi-saw like function. This is especially useful when working with wet line, cord, or cable.



SPEAR POINT

Spear points have sharp, strong tips for piercing and may include a finger rest on top for detailed cutting control. Spear point blades are made for survival and rescue situations where piercing with the knife is needed.



CLEAVER

A cleaver blade is an excellent option for everyday use. This blade excels at chopping or any tasks where puncturing would be less than ideal, like opening packages. This thick blade shape is a durable, reliable choice for daily needs.



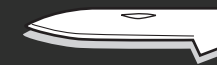
WHARNCLIFFE

Thicker and stronger, wharncliffe blades can handle applied pressure. This blade is typically shorter than average with an arched back for added strength.



COPING

A narrow blade with a sharp, angular point. It is designed to cut in tight places or curved patterns.



PEN

Originally developed to trim quill pens, this blade shape is effectively a smaller version of the spear point.



SHEEPSFOOT

Named due to its shape resembling a sheep's foot. With its flat, straight-line edge and rounded point, this blade will give you a clean cut.



SPEY

Originally developed to neuter farm animals, the blunt point is well suited for sweeping strokes or skinning.

COMMON LOCKING MECHANISMS

LOCKBACK

Named for the rocking lock plate visible on the back of the handle. The opening blade causes the rocker to lock against the blade making for a very trustworthy folder.

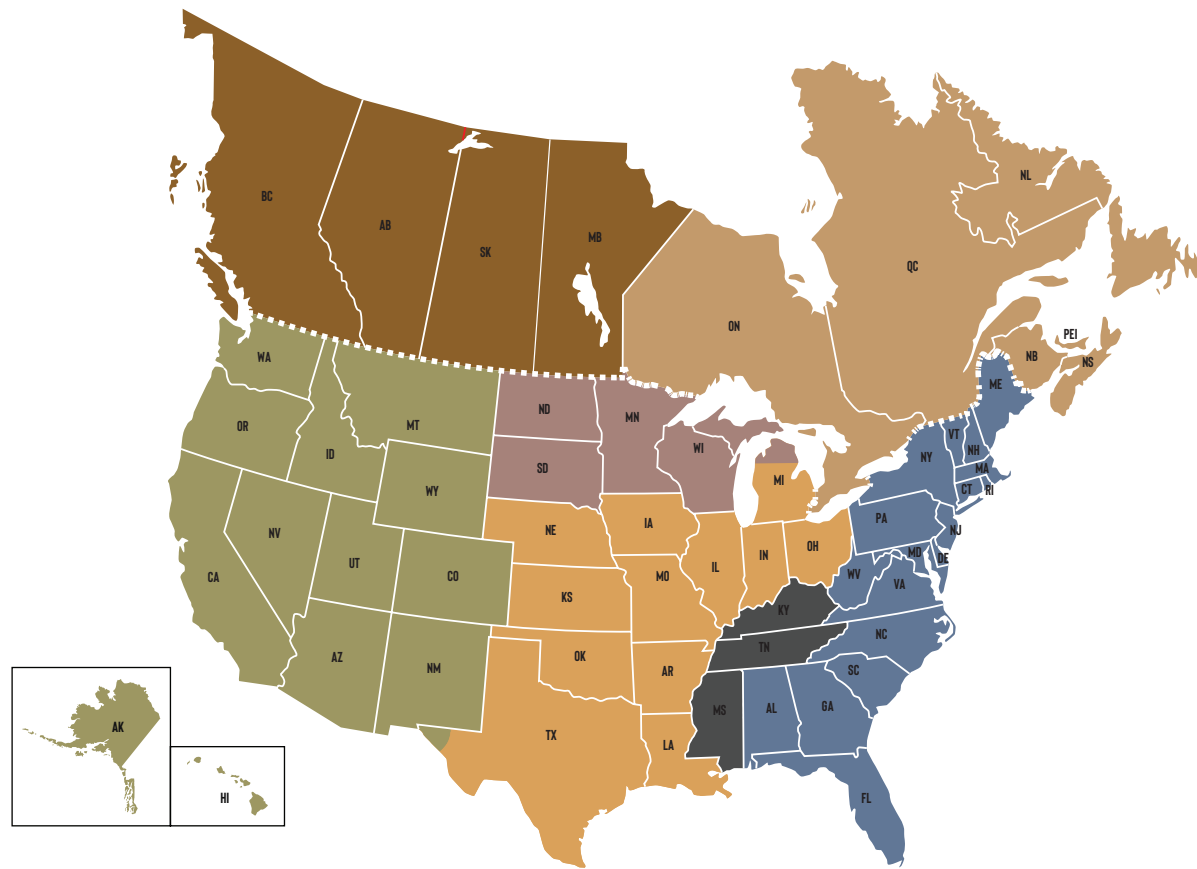
LINER LOCK

Locks open via a tensioned metal liner inside the handle. This mechanism can be closed one handed.

FRAME LOCK

Similar to a liner lock, but when the blade opens, the frame lock moves into the handle opening and locks against the blade.

SALES TERRITORIES



HEAD SALES REPS

- J HARDING ASSOCIATES**
(503)359-5233
or (800)735-2825 ext. 179
- GRIMSRUD-BARNES, INC**
(651)698-1008
or (800)735-2825 ext. 110
- TACKETT BROTHERS, INC**
(479)586-4525
or (800)735-2825 ext. 110
- BELHUMEUR**
(604)814-2161
or (800)735-2825 ext. 179
- UPPER CANADA SPORTS**
(905)562-0162
or (800)735-2825 ext. 180
- IN-HOUSE**
(800)735-2825 ext. 180
- IN-HOUSE**
(800)735-2825 ext. 110

INSIDE SALES CONTACTS

- ANDREA MODINE**
(800)735-2825 ext. 179
amodine@buckknives.com
- JEAN STEVENS**
(800)735-2825 ext. 110
jstevens@buckknives.com
- REBECCA TAMASONIS**
(800)735-2825 ext. 180
rtamasonis@buckknives.com

BUCK KNIVES

EMAIL
dealer@buckknives.com

PHONE
(800)735-2825

INTERNATIONAL PHONE
(208)262-0500 ext. 179

FAX
dealerservicesfax@buckknives.com

ADDRESS
660 S Lochsa St
Post Falls, ID 83854

KNIFE SKU INDEX

0040BKS	53	0112ORS3	47	0254SSS	64	0501RWS	55	0663BRS	26	0814BLS	60	97070	82
0040GRS	53	0112GRS5	49	0259CFS	66	0503RWS	55	0663GYS	27	0814BRS	60	97076	82
0055BRS	55	0113BRS	19	0262GYS	66	0630BKS	31	0663ORS	27	0814ORS	60	97077	82
0084BKX	77	0117BKS	18	0262ODS	66	0630GRS	30	0663WAS	26	0835BRS	71	97078	82
0102BKS	18	0117GRS	16	0263GYS	65	0630ORS	31	0664BKS	24	0836BRS	71	97081	81
0102GRS1	16	0119BKS	18	0263BKS1	65	0631BKS	31	0664BRS	26	0838CFSLE	78	97082	81
0103BKS	18	0119GRS1	16	0263GYS1	65	0631GRS	30	0664GYG	28	0838BKS1	44		
0103GRS1	16	0120BKS	18	0263CPS1	65	0631ORS	31	0664GYS	28	0838ORS	44		
0104BRS1	70	0120GRS1	16	0264GYS	66	0631BKSVP	29	0664ORG	28	0838BLS	44		
0105BKS	18	0144ORS	74	0284BKS	39	0631GRSVP	29	0664ORS	28	0838BKS	45		
0105GRS1	16	0145BLS	74	0284CMS24	39	0631ORSVP	29	0664WAS	26	0838BRS1	45		
0108BRS1	70	0146ORS	74	0284CMS9	39	0635BKS	32	0684BKS	38	0838GYS1	45		
0110BRS	11	0147BLS	74	0285BKS	40	0635GRS	30	0685BKX	38	0839BKS1	44		
0110BRSFG	11	0148ORS	74	0285CMS24	40	0635ORS	32	0685BKS	38	0839ORS	44		
0110BRS1	12	0149BLS	74	0285CMS9	40	0636BKS	32	0691BKX	20	0839BLS	44		
0110BKS1	12	0150BLS	74	0286BKS	40	0636GRS	30	0692BKS	20	0839BKS	46		
0110BKS1	12	0191BRG	20	0286CMS24	40	0636ORS	32	0722BKS1	50	0839BRS1	46		
0110BKS1	48	0192BRS	20	0286CMS9	40	0656GRS	36	0722GYS1	50	0839GYS1	46		
0110ODS2	48	0220BLS	72	0301BKS	56	0656ORS	34	0722ORS1	50	0840BKS1	52		
0110ORS2	48	0223BLS	72	0303BKS	56	0657GRG	36	0726BKS	50	0840BLS	52		
0110BKS3	47	0225BLS	72	0325SSS	61	0657ORG	34	0726GYS	50	0840GRS	52		
0110GRS3	47	0239BKS	63	0327CFS	61	0658GRS	36	0726ORS	50	0841BRS1	52		
0110ORS3	47	0239GRS1	63	0327SSS	61	0658ORS	34	0743SSS	62	0841CFS2	52		
0110GRS5	49	0239GRS	63	0327TTS	61	0659GRS	36	0743CFS	62	0841TNS	52		
0112BRS	14	0239BKS1	63	0341RWS	56	0659ORS	34	0744SSS	62	0843BKS	50		
0112BRSFG	14	0239BLS	63	0346RWS	56	0660GRG	36	0744CFS	62	0843CFS	50		
0112BRS1	14	0239ORS	63	0371BRS	57	0660ORG	34	0811BKS	59	0843GRS	50		
0112BKS1	14	0250BKS	54	0373BRS	57	0661GRS	36	0811CMS	59	0853BRS	71		
0112BKSLE2	78	0250GRS	54	0375BRS	57	0661ORS	34	0811GYS	59	0863BRS	71		
0112GYSLE	78	0250BKS1	54	0379BRS	57	0662BKS	24	0812BLX	60	0870BKX	61		
0112BKS1	48	0250GRS1	54	0382BRS	58	0662BRS	25	0812BRX	60	0870CMX	61		
0112ODS2	48	0251BKS	64	0385BRS	58	0662GYS	27	0812ORX	60	97017	82		
0112ORS	48	0251GRS	64	0389BRS	58	0662ORS	27	0813BKS	59	97032	81		
0112BKS3	47	0252BKS	64	0402BKSLE	77	0662WAS	25	0813CMS	59	97043	81		
0112GRS3	47	0252TNS	64	0500CFSLE	77	0663BKS	24	0813GYS	59	97044	81		

©2023 Buck Knives, Inc. No part of this catalog may be used or reproduced in any form, for any purpose without the express written consent of Buck Knives, Inc. Certain utility and design patents issued to Buck Knives are noted, however, Buck Knives holds additional patents pending, design and utility patents both domestic and foreign on products in this catalog. All trademarks indicated are owned and/or registered by Buck Knives, Inc. except as follows: Dynaflex and Versaflex are a registered trademarks of Polyone Corp.; Micarta is a registered trademark of Industrial Laminates/Norpflex, Inc.; Mossy Oak, Mossy Oak Break-Up COUNTRY and Mossy Oak Blaze are registered trademarks of Haas Outdoors, Inc.; FlipStik and JewelStik are registered trademarks of Hewlett Manufacturing; Cerakote is a registered trademark of NIC Industries, Inc. an Oregon corporation; DymaLux is a registered trademark of Cousineau Wood Products of Maine, LLC.

Knife laws and regulations can vary significantly from location to location. As such, certain styles, sizes and blades may not be permitted in certain locations and areas. Buck Knives produces many different types of knives for a wide variety of legitimate everyday use. However, due to the complex and ever changing nature of knife laws and regulations, it is not possible for Buck Knives to be aware of specific prohibitions in areas where its knives may be purchased, carried, or used. It is the responsibility of the buyer/user to investigate, understand and comply with any and all laws and regulations that may apply to his or her area. The buyer/user is solely responsible for any claims arising from violations of these laws or regulations or any unintended use or misuse of the product.

The sale of automatic knives is federally regulated. Always check permissibility within your state or locality as non-federal personnel may be precluded from ownership or use by state laws. NO EXCEPTIONS WILL BE MADE. Purchase of automatic knives must be preceded by the submission of an Automatic Knife Acknowledgement Form. Shipping of Automatic Knives: Automatic knives shipped by Buck Knives, Inc will be sent via common courier and CANNOT be shipped by the U.S. Postal Service. All returns of automatic knives must be shipped via common courier as well, and not by the U.S. Postal Service. Our policy requires that all automatic knives require a signed Automatic Knife Acknowledgement Form.



BUCK KNIVES, INC.

**660 S LOCHSA STREET
POST FALLS, ID 83854**

**WEB
BUCKKNIVES.COM**

**PHONE
800.735.2825
208.262.0500**

**EMAIL
DEALER@BUCKKNIVES.COM**

**MODEL 12064
CATALOG 13863
PRINTED IN THE USA**

